

SHANTUI

K SERIES HYDROSTATIC DOZER

DH10K, DH13K, DH16K

Model	DH10K	DH13K	DH16K
Power	90 kW/121 hp	118 kW/158 hp	142 kW/190 hp
Weight	10200-11430 kg (22487-25199 lb.)	13700-15300 kg (30203-33731 lb.)	17235-20475 kg (37997-45140 lb.)

SHANTUI CONSTRUCTION MACHINERY CO., LTD.
ADDRESS: No. 58, Highway G327, Jining, Shandong, China
TEL: +86-537-2909369
FAX: +86-537-2311219
EMAIL: trade@shantui.com
WEB: www.shantui.com



shantui e-shop

▲ THE SPECIFICATIONS ARE SUBJECT TO CHANGE WITHOUT NOTICE. THE PICTURES MAY INCLUDE OPTIONS.
THE ACTUAL COLOR & APPEARANCE OF THE PRODUCT MAY DIFFER FROM WHAT IS SHOWN.

Welcome to Shantui!

Home of Value That Works

HOW DO YOU SAY 'DOZER' IN CHINESE?

Just as leading brand names have become substitutes for product names around the world, savvy Chinese often simply say 'Shantui' when they talk about dozers.

It makes sense: Shantui is the King of the Hill in China when it comes to the muscular machines that powered much of China's phenomenal quarter century-long construction boom. For decades, Shantui has led China's dozer market in most every category of market and volume share.

BEYOND THE GREAT WALL

Today, Shantui is well on its way to becoming synonymous with 'dozers' well beyond the borders of China, delivering the mechanical muscle to construct great walls, not to mention dams, power plants, housing, factories, hospitals, buildings, offices, ports—you name it!—just about everywhere on the planet people put mechanical muscle to work to build structures or tear them down.

And in 2010, Shantui became

the world's Number One volume manufacturer and seller of dozers!

IT'S ALL ABOUT MOVING DIRT!

No question about it. Being Number One in the world is a big deal. We're proud of our accomplishments.

But we haven't forgotten how we got to be King of the Hill: Move more dirt better for less and the world will beat a path to your door!

So our job is to make the machines that get your jobs done...better, faster, more efficiently and at a lower cost. It's about more muscle, higher performance, rugged reliability, superb service and building dozers that go from one tough job to the next...and the next...without missing a beat or a day's work.

FAMILY TIES

Shantui's diverse dozers range from just-big-enough to gigantic. Some are designed to get your jobs done in crowded urban environments; others in biting cold or sweltering desert sands, humid rain forests or remote mountaintops. They work for small companies and multinational enterprises. Their operators range from seasoned professionals, to folks who never sat behind a steering wheel before.

But every Shantui dozer shares a common trait:

WE CALL IT VALUE THAT WORKS.

Much of Shantui's operations ▶ are headquartered in a massive well-organized industrial park in Jinan.



SHANTUI—VALUE THAT WORKS!

Great slogan, but how does Shantui create dozers that do more for less, deliver higher performance and greater value?

- Get-the-job-done design. Shantui dozers are packed with all the features you need for efficient work, job-centered productivity and operator safety, but with none of those 'bells and whistles,' costly extraneous add-ons that drive up your costs without enhancing job performance.
- Height, weight and reach. Built to survive and thrive on the toughest job sites under less-than-optimal working conditions, Shantui dozers are consistently heavier and more stable than the other guys' dozers.
- Shantui dozers, Shantui parts. Shantui manufactures all our dozers' structural parts—undercarriage, tracks, buckets, roller sets, torque converters, transmissions and more—in house. That means better quality control for our dozers and a better price for you.
- Designed for onsite maintenance and repair. More maintenance and many repairs can get done onsite without costly, job-delaying downtime.
- Economy of scale. Sometimes bigger is better: Only a world sales and manufacturing leader can supply the just-right dozer—a complete line of more than 20 dozer types and sizes including models with engines that meet Tier 4 final/Euro Stage 4 emission standards—for the vast variety of jobs and conditions our customers take on around China

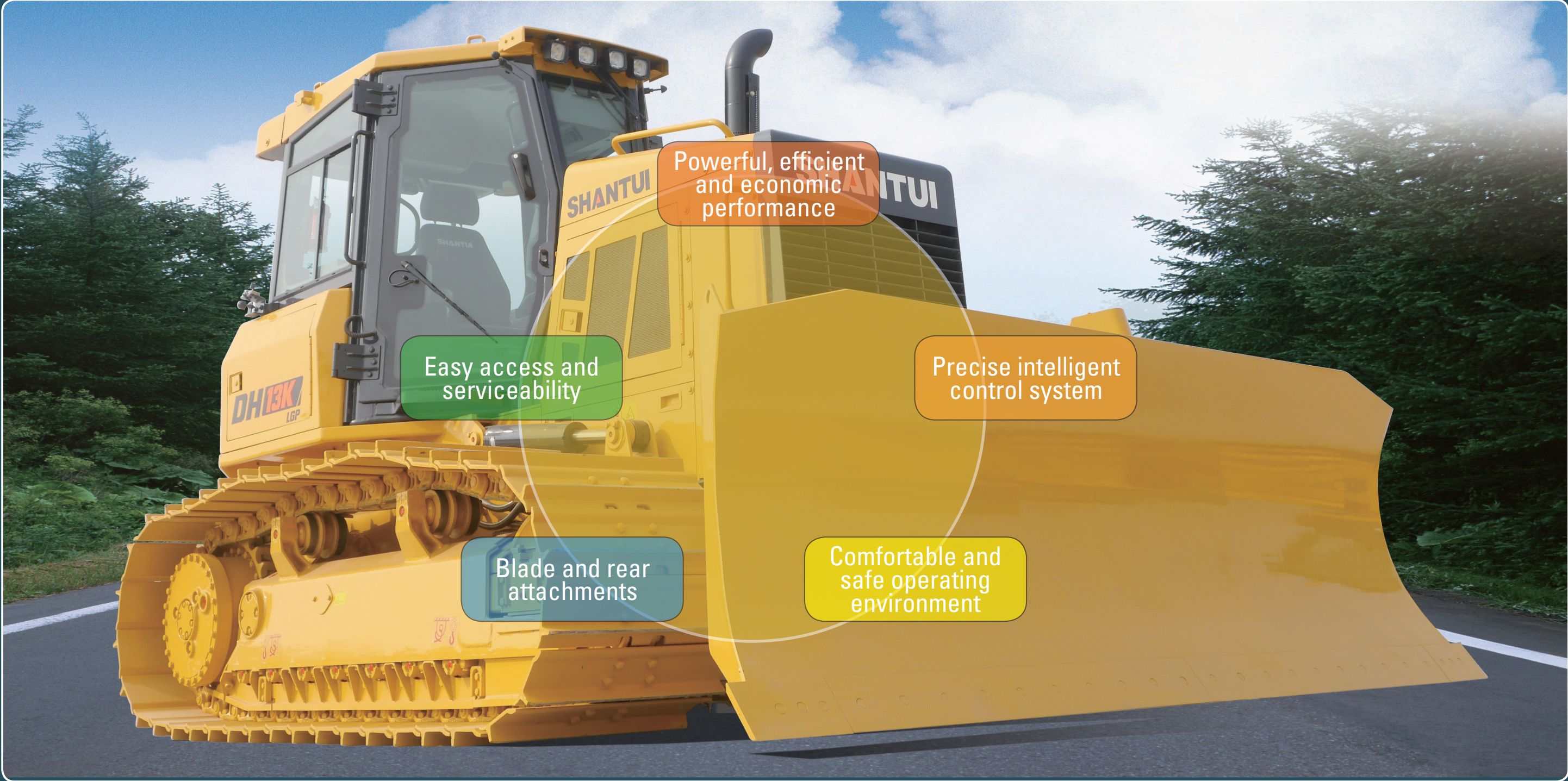
and around the world. Only a world sales and manufacturing leader would devote the R&D resources in arcane fields like high efficiency push factors required to build a better dozer that does more for less. And only a world sales and manufacturing leader could make Anytime, Anywhere Service a worldwide reality.

- Solid machines, solid values. Call us old-fashioned, but we believe that the values held by people who make a product can add to that product's value. Our headquarters are located near the home of Confucius, China's preeminent philosopher; our corporate and personal ethos is steeped in his teachings fostering virtue, loyalty and lofty ethical standards. And we strive to make that philosophy part of each of our business dealings. "Do business today, be friends for life" is more than a slogan. It's a way of life at Shantui.

High value and lower machine cost.

The K series crawler dozer is the latest generation hydrostatic-drive dozer from SHANTUI. Built of the the superiorities of the J series dozer, while using EPA Tier 4f/EU Stage IV engines, state-of-art technologies such as adjustable work-mode and grade assist, the new K series dozer becomes more powerful and intelligent, give you more productivity with less fuel consumption. K series dozer can be used in landscape, municipal engineering, earth-moving, grading, logging and many other applications.

MODEL	NET POWER	WEIGHT	DOZING CAPACITY
DH10K XL	87kW/117hp	10200kg/ 22,487lb.	2.25cu.m /2.9cu.yd
DH10K LGP	87kW/117hp	10500kg/ 23,148lb.	2.43cu.m /3.2cu.yd
DH13K XL	115kW/154hp	13700kg/ 30,203lb.	3.39cu.m /4.43cu.yd
DH13K LGP	115kW/154hp	14300kg/ 31,526lb.	3.69cu.m /4.83cu.yd
DH16K XL	138kW/185hp	17235kg/ 37,800lb.	3.76cu.m /4.92cu.yd
DH16K LGP	138kW/185hp	18400kg/ 40,570lb.	4.4cu.m /5.75cu.yd



Powerful, efficient and economic performance

To give our customers more value, we focused on the crucial characters of efficiency, economy, intelligence and environmental-protection when designing the K series dozers. With FPT NEF series diesel engines and dual hydrostatic drive systems that are automatically controlled by an intelligent, well harmonized program, the K-series dozers have excellent performance while consuming minimal fuel. Whether your working with heavy loads or delicate precise dozing operations, the K-series dozers can do the job to your needs.

OPTIONAL WORK MODES

STANDARD MODE: a balance between efficiency and economy;

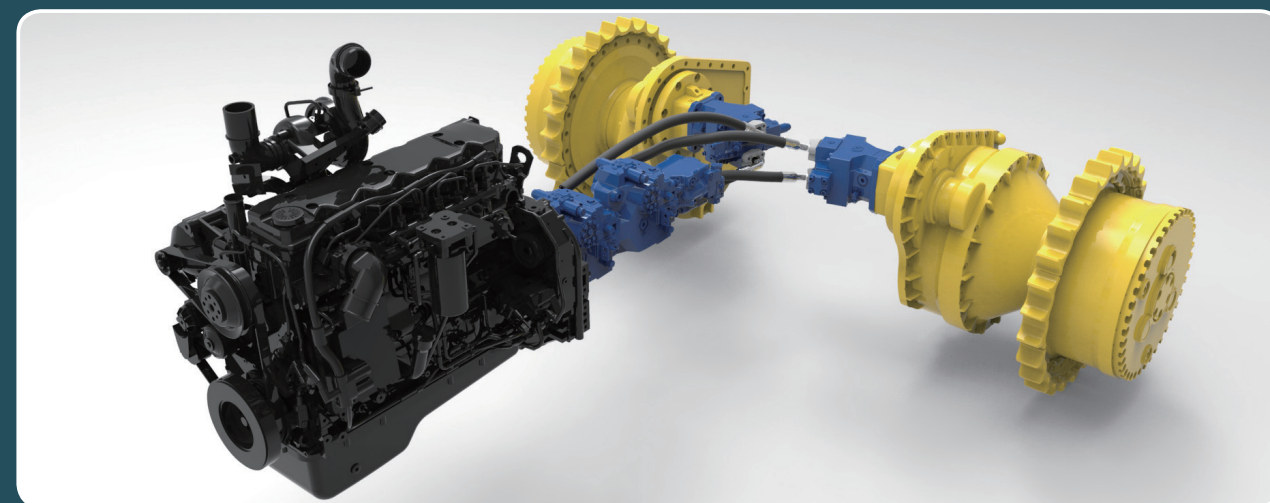
POWER MODE: provides higher power, use with heavy load conditions;

ECONOMY MODE: engine usually operates at lower-speed range, fuel consumption is reduced by up to 20 percent; engine speed can automatically rise when more power is needed. Use this mode with medium-load conditions.

ASSISTANT GRADING SYSTEM

*Helps the operator achieve the wanted slope rapidly and accurately with less back and forth while doing fine grading, improving work quality and efficiency.

*The blade angle and pitch are displayed on the monitor in real time to help the operator know the current blade condition, allowing the best blade-control operation.



Intelligent hydrostatic transmission system

Precise control and high overall efficiency are the main characteristics of our hydrostatic transmission system.

*Smooth starting process, no harsh impact when shifting, steering or reversing.

*From zero to maximum the speed is smooth infinitely variable. The operator only needs to set the maximum required speed, the control program will adjust the displacement of the hydraulic drive motor and/or pump automatically to prevent the engine from being overloaded. For different work conditions, the dozer can adjust itself to a suitable speed automatically. These features can increase productivity and reduce the fuel consumption.

*Speed and running direction of both side track can be controlled individually, so you can turn and counter turn the dozer in any direction. Power turns with load can also be achieved, allowing the operator to operate with more flexibility and efficiency when working in a narrow environments.

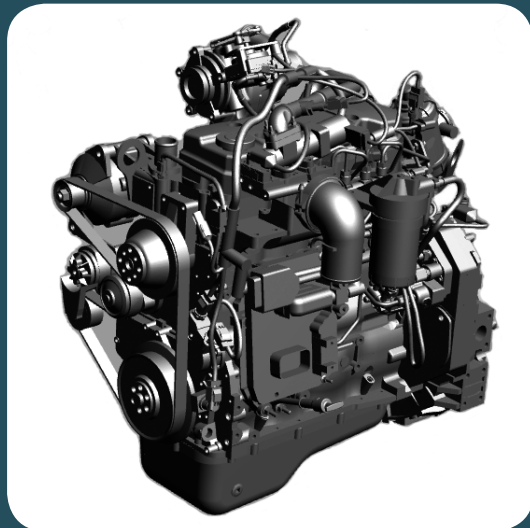
FPT electronic control diesel engine

FPT has leading experience in production design with heavy diesel engine manufacturing. Their NF series engines have many reliable technologies such as an integrated turbocharged, direct injection with air-to-air aftercooling. FPT NF series engines achieve the EPA Tier 4f / EU Stage IV emissions standards to minimized noise and vibration, with excellent performance, fuel economy and durability.

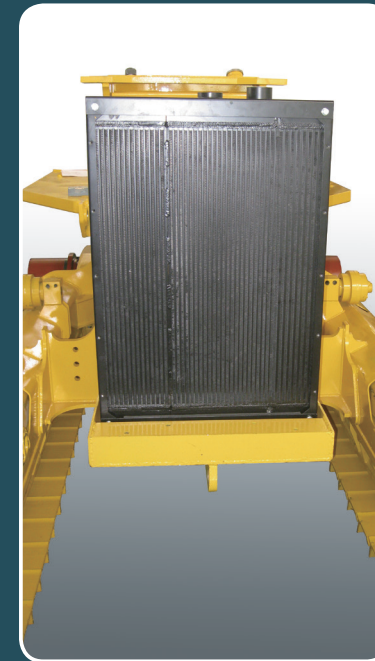


- Increase vehicle productivity due to better transient response
- No additional turbocharger's complexity, but performance in line with FPT industrial competitors
- Low operating costs due to low engine wear and long maintenance intervals (up to 600h depending on the working environment)
- Lean engine design and state-of-the-art HI-eSCR after-treatment system provides flexibility for easy installation
- Lean technology improving durability and reliability
- No additional cooling system requirements compared to the Tier 3 & Tier 4i models

CUMMINS electronic control diesel engine

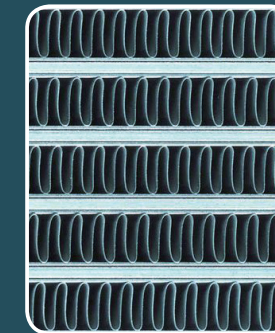


For equipment manufacturers, the Cummins Tier 4 Final / Stage IV package provides a fully integrated air-intake-to-exhaust aftertreatment system designed to minimize space and maximize output. For optimized performance Cummins uses a combination of different Tier 4 Final / Stage IV Technologies across different power bands, ensuring the best result for every application. The technology approach is incremental, where the right usage of diesel oxidation catalyst, selective catalytic reduction or diesel particulate filter technology allows Cummins to meet these stringent standards whilst delivering performance and packaging benefits to the customer. Cummins has vast experience in exhaust aftertreatment, with all solutions designed and built in house by Cummins Emission Solutions. Knowledge and experience with the diesel particulate filter positions Cummins well for any future emissions regulations which would most likely call for particulate level counting.



Integrated aluminum heat exchanger

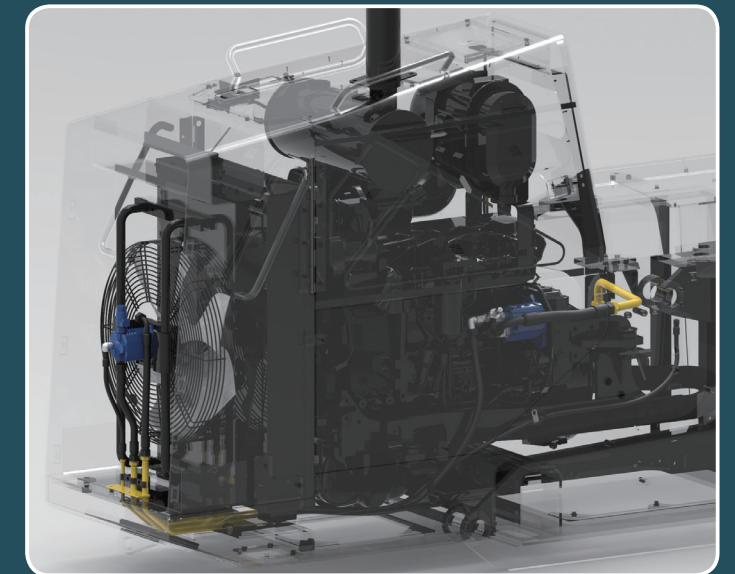
K-series dozers heat exchangers use large fin spacing design which prevents the accumulation of dust, and improves cooling efficiency and durability. The heat exchanger is installed behind a high heavy-duty grill which protects it from being damaged while dozing.



Hydraulic fan system

The cooling fan is driven by a hydraulic motor which controls the fan speed. The fan speed is adjusted automatically by an electronic intelligent control program based on the temperature of engine inlet coolant, engine intake air and hydraulic oil. The higher the temperature the higher the fan speed. The fan always rotates at the minimum needed speed. Compared with the traditional belt-drive fan, the hydraulic fan system consumes less power which greatly improves fuel efficiency and at the same time, fan noise is reduced because of lower fan speed.

An optional hydraulic reversing fan offers automatic or manual modes for changing direction to blow debris out of the radiator cores.



Precise intelligent control system

K-series dozers use state-of-the-art intelligent control and display systems to provide the optimal interaction with the operators. It's so convenient, only simple manipulation is required for efficient operation, the operator can just go to work with no need for extra costs for additional training. The steering and blade are each controlled by their own joystick.

The engine speed decelerator pedal and brake function are integrated by one foot pedal. Blade response rate, steering response rate and the deceleration modes can be set by the operator for his preference anytime during operation.

These intelligent control functions gives more productivity and more comfortable operation experiences.

HAND-CONTROL SYSTEM

The left-hand joystick is used to steer the machine in different directions and move the machine forward or reverse. The thumb wheel is used to shift the machine speed to high or low speeds. The speed pre-set button and horn button is located at the top side of the joystick.

The right-hand joystick is used to control the blade position; up, down, float, tilt, angle and also to shake the blade to remove stuck material.

Both joysticks are ergonomic designed for the most comfortable operation experience while still providing efficient output.

INTEGRATED FOOT PEDAL

Engine deceleration and brake function are integrated on one pedal.

Pedal modes are optional and the operator can easily choose both the pedal modes through a program on the display.

***DECELERATION MODE:** Depress the pedal to decrease the engine speed and at the same time the machine speed will decrease, when the pedal is fully depressed the brakes function will engage and the machine will stop.

***TRANSMISSION MODE:** Depress the pedal to decrease the machine speed, but the engine speed will remain constant, depress the pedal fully to engage the brake function. Under this mode, the dozer will still have enough power when the machine speed is decreased.



MULTI-MODE CONTROL SYSTEM

With multi-mode control system, the operator can set the control mode of many functions to his preference of operation through an interactive monitor. This system will bring you more productivity with comfortable operation.

***STEER MODE:** The three steering modes are aggressive, standard and gentle. Under these different modes, the dozer has different response ratios to the steering joystick operation.

***BLADE-CONTROL MODE:** The three blade-control modes are rough, standard and tenuous. Under these different modes, the blade has different response ratios to the blade joystick operation.

ADDITIONAL SAFETY CONTROL FUNCTIONS

***Load-sensing seat,** the dozer will stop automatically and all operation functions will stop, if the operator leaves the seat, this will assure safety.

***The brake function** will be automatically engaged three seconds later, when the left joystick for travelling and steering is put in the neutral position.

***Optional rear-facing camera** is available as an optional appliance instead of a rear view mirror.

The operator can observe a clearer and instinctive view about the rear condition of the machine during operating through a LCD screen.



Safe and Comfortable operating experience

With ergonomics in mind, the K Series' cabs provide a friendly and comfortable environment for operators, reducing fatigue when operating for a long time, helping you work more efficiently and productively.



*The spacious cab offers all-day comfort with wide door openings and large door windows which give excellent visibility to the blade, curbs and tight spaces too help operators to work more precisely. The one-piece cab structure is integrated with the ROPS / FOPS for operator safety and has high rigidity and superb sealing performance which greatly reduce noise and vibration for the operator and minimize dust entering the cab. Retractable seat belt, slip resistant floor mat and convenient grab handles assists the operator safety.



*Comfortable fabric, high-back air-suspension seat with adjustable head and back rests are standard. The bottom seat cushion has multi-way adjustments. The seat is for all day operator comfort for operator support. Optional electric heated seats are available. Separate leather-bolstered arm rests with height and angle adjustments are fitted for operator comfort.



*An AM/FM/MP3 radio which includes an USB and multimedia interface is standard. The cab also has a 12-volt electrical outlet for powering a mobile phone.



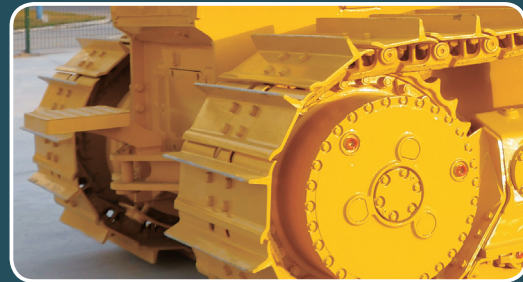
*The dash is fitted with a high resolution 7 inch large color intelligent LCD instrument display with anti glare full color screen. The friendly interface developed by Shantui, can accurately read real time system temperatures, pressures, forward and reverse directions and speeds. Different languages preferences and a choice of metric and SAE settings can be selected. Easy to read gauges keep you informed of system conditions. The function keys simplify multi-functions to conveniently inform you at any time you need the machine information.



*Highly efficient air conditioning system has numerous directional outlet vents to keep the view clear and the cab comfortable. The rotary control panel is convenient to operate.

Blade and rear attachments

Selecting the appropriate attachments will bring higher output to the machine. The Variable Power Angle Tilt blade (VPAT) is standard with all K series dozers. Optional attachments are three-shank parallelogram ripper, winch or drawbar. A dual control package makes it simple to utilize either a ripper or winch. Ask your SHANTUI dealer for available options to help you optimize your machine for the correct options.



*Rigid and reliable drawbar is a standard configuration to meet your various dragging demands.



*Four forward and two rear high-intensity halogen work lights are positioned high for nearly 360 deg superior illumination to extend your workday beyond daylight.



*Three-shank aggressive parallelogram ripper lets you do more productive ripper work. The parallel linkage design provides better penetration and maneuverability in tight working areas.



*Hydrostatic winch can be used for self rescue, equipment recovery, logging, or other maneuvers. The SHANTUI hydrostatic winch features excellent line pull at any speed and infinitely variable drum speed.



*For landfill work, anything that could be susceptible to damage has been sealed, rerouted, or reengineered to help deliver the productivity and ensure maximum uptime.

PURPOSE-BUILT TO IMPROVE PRODUCTIVITY AND DURABILITY, SHANTUI VPAT FEATURES:

- *Rugged, Variable Pitch Angle Tilt (VPAT) blade allows you to hydraulically adjust lift, angle and tilt for precise results. For different working conditions, a broad choice of track shoe designs and widths help you further optimize your machine for performance and longer life.
- *Closed-cell blade design and fabricated, box-section C-frame provides maximum torsional stiffness and optimal absorption of forces. And using wear-resisting material in front of the blade can prolong the durability and reliability.
- *Cutting edge angles and blade moldboard geometry are designed to provide exceptional balance between fine/light dozing and aggressive heavy material movement.
- *Using wear-resisting material, cutting edges and end bits can be used twice to save cost by exchanging opposite parts.
- *Cylinder guards keep hydraulic hoses and cylinders OUT OF DANGER.

Easy access and serviceability

Preventative maintenance is the best way to ensure long running life from your equipment. That's why SHANTUI designed the K series with conveniently located maintenance points and self-diagnostic functions to make necessary inspections and maintenance quick and easy.

*We provide clear and easy-to-understand instructions and process to help you make maintenance and repair more easily.

*Hinged engine side shields swing open wide for convenient access to dipsticks, fill tubes, batteries, master electrical shutoff, the backside of the cooler, and engine, transmission, and hydraulic filters. Vertical filters allow quick, no-spill changes.



*All the filters' operation and status of engine, hydraulics, and transmission are indicated with icons and on-screen displays. The diagnostic monitor also provides easy-to-understand messages that help speed troubleshooting.



*Grouped pressure taps for quick testing and troubleshooting of the hydraulic system. Clear identification brings convenience of troubleshooting and helps reduce downtime.



*Modular design allows the components to be easily accessed, removed and installed without spilling oil. This can further help reduce downtime and enhance serviceability.



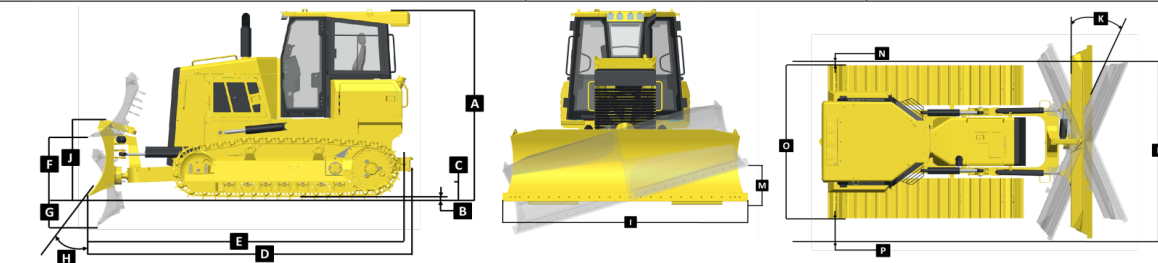
*High-speed rotation, high temperature and other hazardous components are designed with shields, insulation boards, or insulation sets; automatic parking braking function, handrails and anti-skid pedals ensure your complete safety during operating and maintenance. Speakers, reversing alarm, fluorescent signs and clear machine painting, effectively help protect the safety of external personnel and enhance the security of all-weather operations.

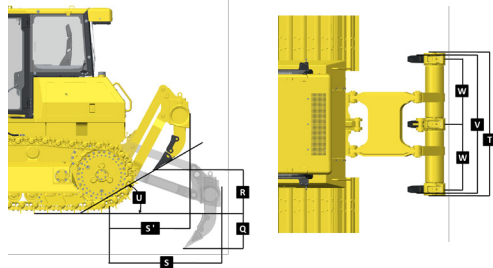
*Our service network provides excellent standard services and extended service options, after-sales service through our training agents and professional engineers for your equipment to provide uninterrupted technical support.

DH10K

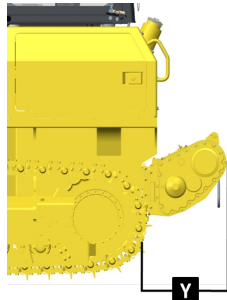
Technical Specifications:

ENGINE		
ENGINE	Cummins QSB 4.5	
NON-ROAD EMISSION STANDARD	EPA Tier4 final/ Euro Stage IV	
RATED SPEED	2200rpm	
GROSS POWER	90kW(121hp)	
NET POWER	87kW(117hp)	
NUMBER OF CYLINDERS-BORE*STROKE	4-107mm-124mm(4-4in.-5in.)	
PISTON DISPLACEMENT	4.46L(272cu.in.)	
MAXIMUM TORQUE	470Nm(347lb.-ft.)/1500rpm	
COOLING SYSTEM	Intelligent temperature control fan	
POWER TRANSMISSION SYSTEM		
POWER TRANSMISSION SYSTEM	Double loop electro static pressure drive, intelligent matching load change	
SYSTEM OVERFLOW PRESSURE	42500KPa(6162.5psi)	
TRAVEL SPEED		
FORWARD	0~9km/h(5.6mph)	
REVERSE	0~9km/h(5.6mph)	
MAX. DRAWBAR PULL	151kN(34000lb)	
STEERING CLUTCH	Hydraulic motor differential steering, in situ steering, steering with load	
STEERING BRAKE	Normally closed brake	
FINAL DRIVE	One stage straight gear + One stage planetary gear	
UNDERCARRIAGE SYSTEM	XL	LGP
TYPE	Pivot, balanced beam suspension	Pivot, balanced beam suspension
TRACK TYPE	Single-grouser SALT: sealed and lubricant track	Single-grouser SALT: sealed and lubricant track
TRACK GAUGE	1700mm(67in.)	1900mm(75in.)
GROUSER WIDTH	460mm(18in.)	660mm(26in.)
TRACK LENGTH ON GROUND	2360mm(93in.)	2360mm(93in.)
GROUND AREA	21712cm² (3365sq.in.)	31152cm² (4829sq.in.)
TRACK PITCH OF SHOES PER SIDE	39	39
GROUND PRESSURE	46.1kPa(6.7psi)	33.2kPa(4.8psi)
CARRIER ROLLERS	2 Pieces/side	2 Pieces/side
TRACK ROLLERS	6 Pieces/side	6 Pieces/side
TRACK PITCH	171.45mm(7in.)	171.45mm(7in.)
MIN. TURNING RADIUS	3285mm(129in.)	3323mm(131in.)
MAINTENANCE REFILL CAPACITY		
FUEL TANK CAPACITY	232L(61gal.)	
COOLANT CAPACITY	27.3L(7.2gal.)	
ENGINE OIL CAPACITY	10L(2.6gal.)	
HYDRAULIC TANK	80L(21.1gal.)	
FINAL DRIVE	4L(1.1gal.)/side	
DIESEL EXHAUST FLUID (DEF) TANK	19 L (5 gal.)	
OPERATING WEIGHT	XL	LGP
TRACTOR WEIGHT	10200kg(22487lb.)	10500kg(23148lb.)
EQUIPPED WITH RIPPER	10917KG(24068lb.)	11217KG(24729lb.)
EQUIPPED WITH WINCH	11130KG(24537lb.)	11430KG(25199lb.)

OVERALL DIMENSION		XL	LGP
BLADE TYPE		PAT	PAT
BLADE CAPACITY		2.25cu.m(2.9cu.yd.)	2.43cu.m(3.2cu.yd.)
			
A	OVERALL HEIGHT	2880mm(113in.)	2880mm(113in.)
B	GROUSER HEIGHT	50mm(2in.)	50mm(2in.)
C	GROUND CLEARANCE:	340mm(13in.)	340mm(13in.)
D	OVERALL LENGTH	4405mm(173in.)	4405mm(173in.)
E	LENGTH WITHOUT TRACTION FRAME	4700mm(185in.)	4700mm(185in.)
F	BLADE LIFT HEIGHT	900mm(35in.)	900mm(35in.)
G	BLADE DIGGING DEPTH	450mm(18in.)	450mm(18in.)
H	BLADE CUTTING-EDGE ANGLE, ADJUSTABLE	55°±3°(deg.)	55°±3°(deg.)
I	BLADE WIDTH	3150mm(124in.)	3306mm(130in.)
J	BLADE HEIGHT	1005mm(39.6in.)	1005mm(39.6in.)
K	THE MAXIMUM SWING ANGLE OF BLADE	25°(deg.)	25°(deg.)
L	THE BLADE WIDTH AT THE MAXIMUM SWING ANGLE	2806mm(110.5in.)	2939mm(115.7in.)
M	BLADE TILT HEIGHT	436mm(17in.)	458mm(18in.)
N	CUT REACH	41mm(1.6in.)	6 mm(0.24in.)
O	TRACK WIDTH AT BOTH ENDS	2360mm(93in.)	2560mm(100in.)
P	CAST REACH	405mm(16in.)	373mm(14.7in.)

RIPPER (OPTIONAL)			
TYPE		Three-shank ripper	
WEIGHT		683kg(1505lb.)	
R	MAXIMUM LIFT ABOVE GROUND	440mm(17in.)	
Q	MAXIMUM DIGGING DEPTH	340mm(13in.)	
S	RIPPER LENGTH (THE SUBSOILING POSITION)	1353mm(53in.)	
S'	RIPPER LENGTH (MAXIMUM LIFT POSITION)	972mm(38in.)	
T	OVERALL RIPPER WIDTH	1766mm(69.5in.)	
U	SLOPE ANGLE	25mm(1in.)	
V	RIPPING WIDTH	1600mm(63in.)	
W	DISTANCE BETWEEN SHANKS	745.5mm(29in.)	

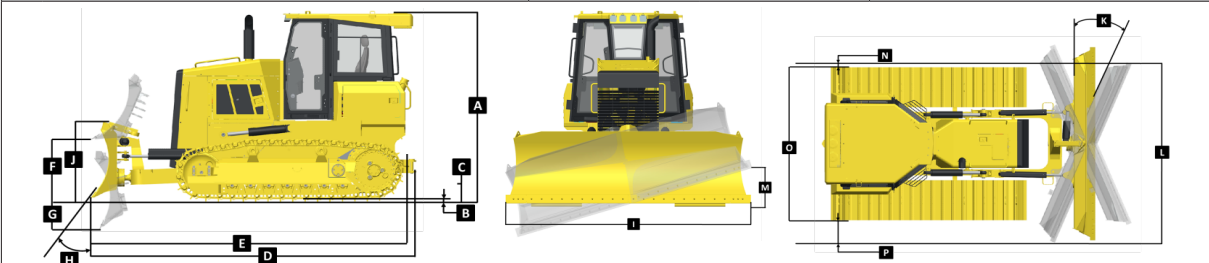
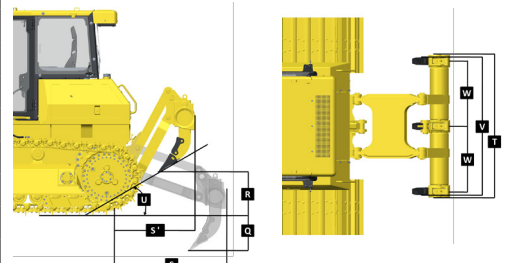
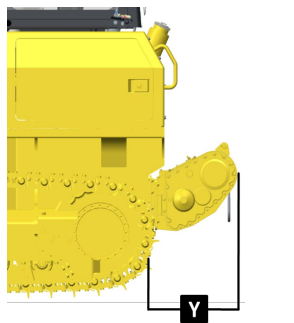
WINCH (OPTIONAL)			
TYPE		Hydraulic Winch (H4A)	
WEIGHT		612kg(1349lb.)	
OPTIONAL WIRE DIAMETER		16/19mm(0.63/0.75in.)	
MAXIMUM LENGTH OF WIRE		84/59m(275 ft.7in./193 ft.7in.)	
MAXIMUM WIRE FORCE(BARE DRUM)		14880kg(32805lb)	
MAXIMUM WIRE FORCE(FULL DRUM)		8500kg(18739lb)	
WIRE RATED SPEED(BARE DRUM)		22.3m/min (44 ft.7in./min)	
Y	WINCH LENGTH	800mm(31.5in.)	



DH13K

Technical Specifications:

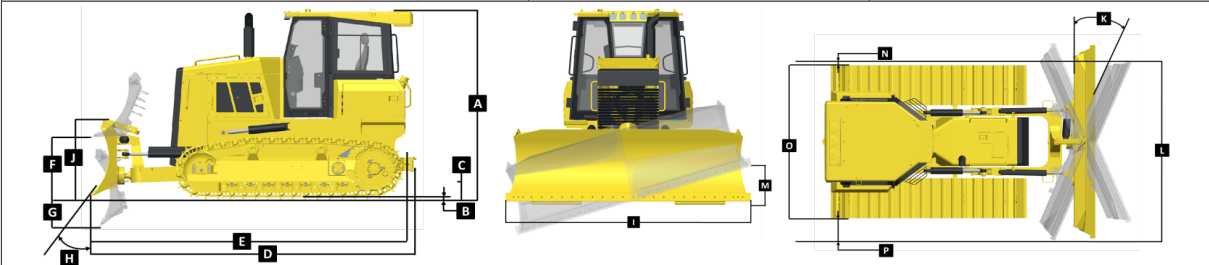
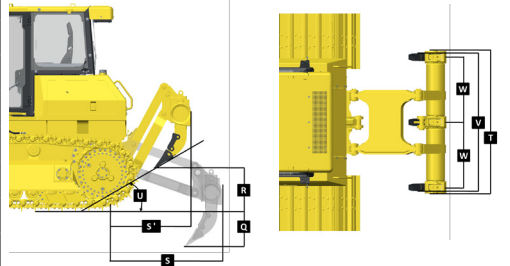
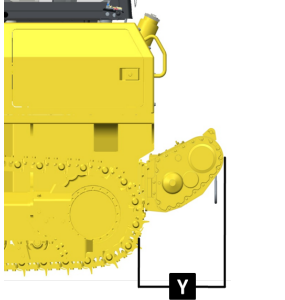
ENGINE		
ENGINE	FPT N67 // Cummins QSB6.7	
NON-ROAD EMISSION STANDARD	Tier4 final/ Euro Stage IV	
RATED SPEED	2200rpm	
GROSS POWER	118kW(158hp) // 116kW(155hp)	
NET POWER	115kW(154hp) // 113kW(151hp)	
NUMBER OF CYLINDERS-BORE*STROKE	6-104mm-132mm(6-4in.-5in.) // 6-107mm-124mm(6-4.2in.-4.9in.)	
PISTON DISPLACEMENT	6.7L(409cu.in.)	
MAXIMUM TORQUE	750Nm(554lb.-ft.)/1500rpm // 672Nm(496lb.-ft.)/1500rpm	
COOLING SYSTEM	Intelligent temperature control fan	
POWER TRANSMISSION SYSTEM		
POWER TRANSMISSION SYSTEM	Double loop electro static pressure drive, intelligent matching load change	
SYSTEM OVERFLOW PRESSURE	42500KPa(6162.5psi)	
TRAVEL SPEED		
FORWARD	0 ~ 10km/h(6.2mph)	
REVERSE	0 ~ 10km/h(6.2mph)	
TRACTIVE FORCE	200kN(45000lb.)	
STEERING CLUTCH	Hydraulic motor differential steering, in situ steering, steering with load	
STEERING BRAKE	Normally closed brake	
FINAL DRIVE	One stage straight gear + One stage planetary gear	
UNDERCARRIAGE SYSTEM	XL	LGP
TYPE	Pivot, balanced beam suspension	Pivot, balanced beam suspension
TRACK TYPE	Single-grouser,dry	Single-grouser,dry
TRACK GAUGE	1930mm(76in.)	2150mm(79in.)
GROUSER WIDTH	560mm(22in.)	760mm(30in.)
TRACK LENGTH ON GROUND	2640mm (104in.)	2640mm (104in.)
GROUND AREA	29568cm ² (4583sq.in.)	40128cm ² (6220sq.in.)
TRACK PITCH OF SHOES PER SIDE	40	40
GROUND PRESSURE	46.3kPa(6.71psi)	35.6kPa(5.16psi)
CARRIER ROLLERS	2 Pieces/side	2 Pieces/side
TRACK ROLLERS	7 Pieces/side	7 Pieces/side
TRACK PITCH	190mm(7in.)	190mm(7in.)
MIN. TURNING RADIUS	3468mm(137in.)	3543mm(139in.)
MAINTENANCE CAPACITY		
FUEL TANK CAPACITY	251L(66 gal.)	
COOLANT CAPACITY	30L(8.0 gal.)	
ENGINE OIL CAPACITY	20L(5.3 gal.)	
HYDRAULIC TANK	41.5L(11gal.)	
FINAL DRIVE	65L(17 gal.)	
FINAL DRIVE	19L(5 gal.)/side	
DIESEL EXHAUST FLUID (DEF) TANK	43L(11.4 gal.)	
OPERATING WEIGHT	XL	LGP
TRACTOR WEIGHT	13700kg(30203lb.)	14300kg(31526lb.)
EQUIPPED WITH RIPPER	14900KG(32849lb.)	--
EQUIPPED WITH WINCH	14700KG(32408lb.)	15300kg(33731lb.)

OVERALL DIMENSION		XL	LGP
BLADE TYPE		PAT	PAT
DOZING CAPACITY		3.39cu.m(4.4cu.yd.)	3.69cu.m(4.83cu.yd.)
			
A	OVERALL HEIGHT	3043mm(120in.)	3043mm(120in.)
B	GROUSER HEIGHT	50mm(2in.)	50mm(2in.)
C	GROUND CLEARANCE:	360mm(14in.)	360mm(14in.)
D	OVERALL LENGTH	5010mm (197in.)	5010mm (197in.)
E	LENGTH WITHOUT TRACTION FRAME	4958mm (195in.)	4958mm (195in.)
F	BLADE LIFT HEIGHT	950mm (37in.)	950mm (37in.)
G	BLADE DIGGING DEPTH	460mm (18in.)	460mm (18in.)
H	BLADE CUTTING-EDGE ANGLE, ADJUSTABLE	55°±3°(deg.)	55°±3°(deg.)
I	BLADE WIDTH	3380mm (133in.)	3680mm (145in.)
J	BLADE HEIGHT	1120mm (44in.)	1120mm (44in.)
K	THE MAXIMUM SWING ANGLE OF BLADE	25°(deg.)	25°(deg.)
L	THE BLADE WIDTH AT THE MAXIMUM SWING ANGLE	3063mm (121in.)	3430mm (135in.)
M	BLADE TILT HEIGHT	510mm (20.1in.)	560mm (22.1in.)
N	CUT REACH	54mm (2.13in.)	91mm (3.6in.)
O	TRACK WIDTH AT BOTH ENDS	2490mm (98in.)	2910mm (115in.)
P	CAST REACH	465mm (18.3in.)	430mm (17in.)
RIPPER (OPTIONAL)			
TYPE		Three-shank ripper	
WEIGHT		1035kg (2282lb.)	
R	MAXIMUM LIFT ABOVE GROUND	600mm (23.6in.)	
Q	MAXIMUM DIGGING DEPTH	500mm (20in.)	
S	RIPPER LENGTH (THE SUBSOILING POSITION)	1530mm (60in.)	
S'	RIPPER LENGTH (MAXIMUM LIFT POSITION)	1230mm (48in.)	
T	OVERALL RIPPER WIDTH	1759mm (69in.)	
U	SLOPE ANGLE	43°°(deg.)	
V	RIPPING WIDTH	1696mm (66.7in.)	
W	DISTANCE BETWEEN SHANKS	800mm (31.5mm)	
			
WINCH (OPTIONAL)			
TYPE		Hydraulic Winch (H5CT)	
WEIGHT		998kg(2200lb.)	
OPTIONAL WIRE DIAMETER		16mm(0.63in.)/19mm(0.75in.) /22mm(0.87in.)	
MAXIMUM LENGTH OF WIRE		128.9m(422ft.11in.)/90.8m(297ft.11in.) /65.5m(214ft.11in.)	
MAXIMUM WIRE FORCE(BARE DRUM)		28190kg(62148lb.)	
MAXIMUM WIRE FORCE(FULL DRUM)		15190kg(33488lb.)	
WIRE RATED SPEED(BARE DRUM)		13.6m/min(73ft.2in./min)	
Y	WINCH LENGTH	900mm(35in.)	
			

DH16K

Technical Specifications:

ENGINE		
ENGINE	Cummins QSB 6.7 // FPT N67	
NON-ROAD EMISSION STANDARD	Tier4 final/ Euro Stage IV	
RATED SPEED	2000rpm // 2100rpm	
GROSS POWER	142kW(190hp)	
NET POWER	138kW(185hp)	
NUMBER OF CYLINDERS-BORE*STROKE	6-107mm-124mm(6-4in.-5in.) // 6-104mm-132mm(6-4in.-5in.)	
PISTON DISPLACEMENT	6.7L(409cu.in.)	
MAXIMUM TORQUE	809Nm(597lb.-ft.)/1500rpm // 850Nm(627lb.-ft.)/1400rpm	
COOLING SYSTEM	Intelligent temperature control fan	
POWER TRANSMISSION SYSTEM		
POWER TRANSMISSION SYSTEM	Double loop electro static pressure drive, intelligent matching load change	
SYSTEM OVERFLOW PRESSURE	42500KPa(6162.5psi)	
TRAVEL SPEED		
FORWARD	0~10km/h6.2mph)	
REVERSE	0~10km/h6.2mph)	
MAX. DRAWBAR PULL	230kN(35000lb)	
STEERING BRAKE	Normally closed brake	
FINAL DRIVE	One stage straight gear + One stage planetary gear	
UNDERCARRIAGE SYSTEM	XL	LGP
TYPE	Pivot, balanced beam suspension	Pivot, balanced beam suspension
TRACK TYPE	Single-grouser SALT: sealed and lubricant track	Single-grouser SALT: sealed and lubricant track
TRACK GAUGE	2040mm(80.3in.)	2350mm(92.5in.)
GROUSER WIDTH	560mm/(22in.)610mm(24in.)	810mm(32in.)
TRACK LENGTH ON GROUND	3075mm(121in.)	3075mm(121in.)
GROUND AREA	34440/37515cm² (5338/5815sq.in.)	49815cm² (7721sq.in.)
TRACK PITCH OF SHOES PER SIDE	43	43
GROUND PRESSURE	47kPa(6.82psi)	34.3kPa(4.97psi) / 39.3kPa(5.71psi)(ripper)
CARRIER ROLLERS	2 Pieces/side	2 Pieces/side
TRACK ROLLERS	8 Pieces/side	8 Pieces/side
TRACK PITCH	203mm(8in.)	203mm(8in.)
MIN. TURNING RADIUS	3879mm(152.7in.)	4012mm(158in.)
MAINTENANCE REFILL CAPACITY		
FUEL TANK CAPACITY	419L(111gal.)	
COOLANT CAPACITY	29L(7.7gal.)	
ENGINE OIL CAPACITY	16L(4.2gal.)	
HYDRAULIC TANK	165L(43.15gal.)	
FINAL DRIVE	31L(8.2gal.)/Side	
DIESEL EXHAUST FLUID (DEF) TANK	43L(11.4 gal.)	
OPERATING WEIGHT	XL	LGP
TRACTOR WEIGHT	17235kg(37783lb.)	18400kg(40351lb.)
EQUIPPED WITH RIPPER	18780KG(41189lb.)	19945KG(43739lb.)
EQUIPPED WITH WINCH	19310KG(42358lb.)	—

OVERALL DIMENSION		XL	LGP
BLADE TYPE		PAT	PAT
BLADE CAPACITY		3.76cu.m(4.9cu.yd.)	4.4cu.m(5.7cu.yd.)
			
A	OVERALL HEIGHT	3065mm(121in.)	3065mm(121in.)
B	GROUSER HEIGHT	65mm(2.5in.)	65mm(2.5in.)
C	GROUND CLEARANCE:	370mm(14.6in.)	370mm(14.6in.)
D	OVERALL LENGTH	5800mm(228in.)	5800mm(228in.)
E	LENGTH WITHOUT TRACTION FRAME	5545mm(218.5in.)	5545mm(218.5in.)
F	BLADE LIFT HEIGHT	1025mm(40in.)	1025mm(40in.)
G	BLADE DIGGING DEPTH	650mm(26in.)	650mm(26in.)
H	BLADE CUTTING-EDGE ANGLE, ADJUSTABLE	55°±3°(deg.)	55°±3°(deg.)
I	BLADE WIDTH	3451mm(135.5in.)	4011mm(157.9in.)
J	BLADE HEIGHT	1195mm(47in.)	1195mm(47in.)
K	THE MAXIMUM SWING ANGLE OF BLADE	24°(deg.)	24°(deg.)
L	THE BLADE WIDTH AT THE MAXIMUM SWING ANGLE	3152mm(124.1in.)	3644mm(143.65in.)
M	BLADE TILT HEIGHT	450mm(18in.)	528mm(21in.)
N	CUT REACH	46mm(2.8in.)	21mm(2in.)
O	TRACK WIDTH AT BOTH ENDS	2600mm(97.9in.)	3160mm(120.4in.)
P	CAST REACH	506mm(22.1in.)	482mm(21.3in.)
RIPPER (OPTIONAL)			
TYPE		Three-shank ripper	
WEIGHT		1493kg(3291lb.)	
R	MAXIMUM LIFT ABOVE GROUND	572mm(22in.)	
Q	MAXIMUM DIGGING DEPTH	492mm(19in.)	
S	RIPPER LENGTH (THE SUBSOILING POSITION)	1785mm(70.2in.)	
S'	RIPPER LENGTH (MAXIMUM LIFT POSITION)	1298mm(51.0in.)	
T	OVERALL RIPPER WIDTH	2082mm(82in.)	
U	SLOPE ANGLE	43°	
V	RIPPING WIDTH	1900mm(75in.)	
W	DISTANCE BETWEEN SHANKS	950mm(37in.)	
			
WINCH (OPTIONAL)			
TYPE		Hydraulic Winch (H6H)	
WEIGHT		2138kg(4713.5lb)	
OPTIONAL WIRE DIAMETER		22/25mm(0.866/0.984in.)	
MAXIMUM LENGTH OF WIRE		91/70m(298 ft.7in./229ft.7in.)	
MAXIMUM WIRE FORCE(BARE DRUM)		40733kg(89800lb)	
MAXIMUM WIRE FORCE(FULL DRUM)		23420kg(51632lb)	
WIRE RATED SPEED(BARE DRUM)		18m/min (35.5 ft.7in./min)	
Y	WINCH LENGTH	1439mm(56.7in.)	
			

SPARE PARTS

A key element in Shantui Value

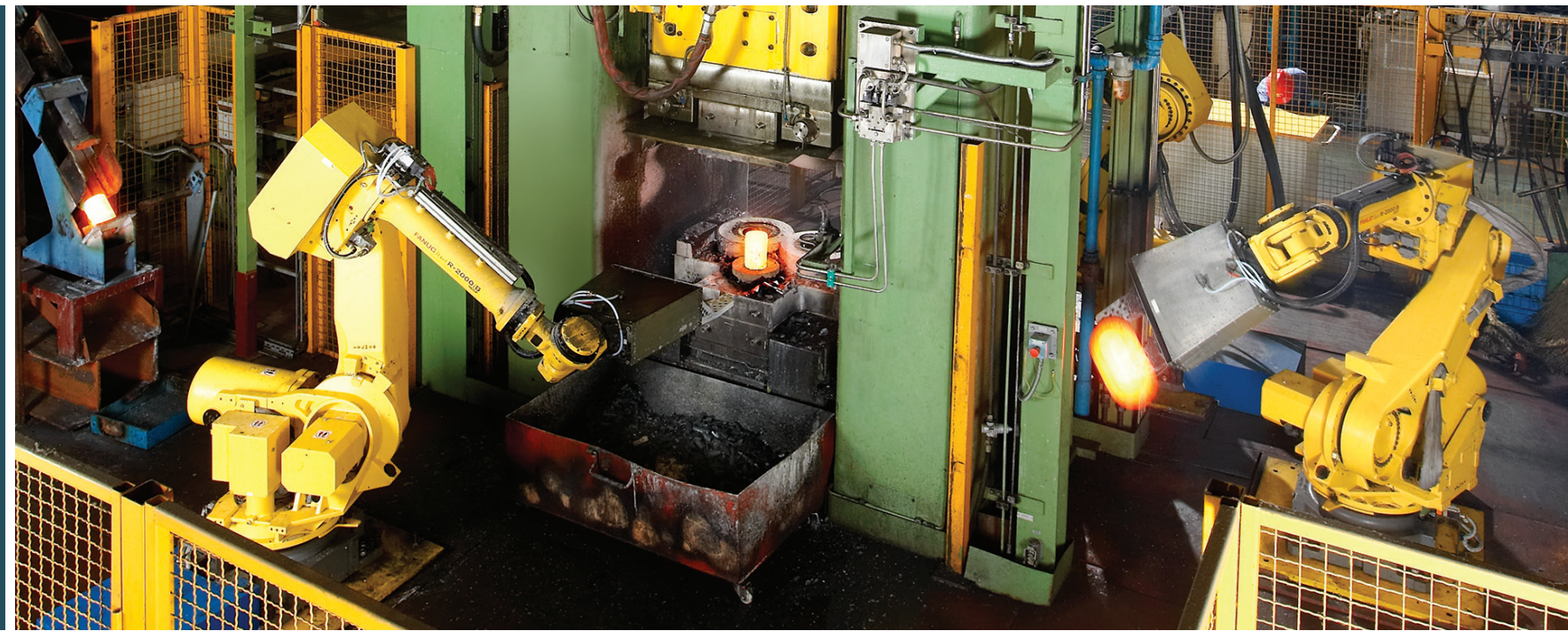
How Shantui's dominant position in the production of all types of parts and components for construction machinery adds up to more **VALUE** for you.

Shantui actually makes its own structural parts, including arms, tracks, undercarriages, roller sets, buckets, and also makes its own transmissions, torque converters and much more for a wide range of construction machinery products.

Unlike most competitors in China, Shantui doesn't just assemble machines—we build them from scratch. Many of Shantui's competitors in China and around the world—are also its customers when it comes to parts. It's one more reason why Shantui delivers better value in its finished products.

SHANTUI PARTS WITHSTAND STRESS—SO YOU DON'T HAVE TO!

Shantui manufactures many of our lines' structural parts—undercarriage, tracks, buckets, roller sets, torque converters, transmissions and more—in house. That means better quality control for our bulldozers and a better price for you. Parts and components—The Shantui Way.



Easy installation.

Simple design makes for easy cleaning, mounting and dismantling of the main links, assuring reliability and high endurance. High-temp, inductive hard surfaces ensure the best strength and superior wear-resistance.

Crack-proof.

When the bushing material is cold extruded, the steel fibers in it are evenly distributed. Carburization then ensures sufficient core hardness and wear-resistance of the surface.

Strength.

Special heat treatment and quenching ensures the strong wear-resistance of the pin shaft for anti-bump, anti-stress and consistent strength, which is critical to the process.

All-around adaptability.

Track shoes include single-tooth, double-tooth, as well as swamp type, to meet all varieties of work conditions, with strong wear-resistance and enduring performance.

Transmissions.

At Shantui, we make our own transmissions for our many lines. This is a key component in our vertical integration, further contributing to our trademark value proposition.



OUR GLOBAL SALES AND SERVICE NETWORK

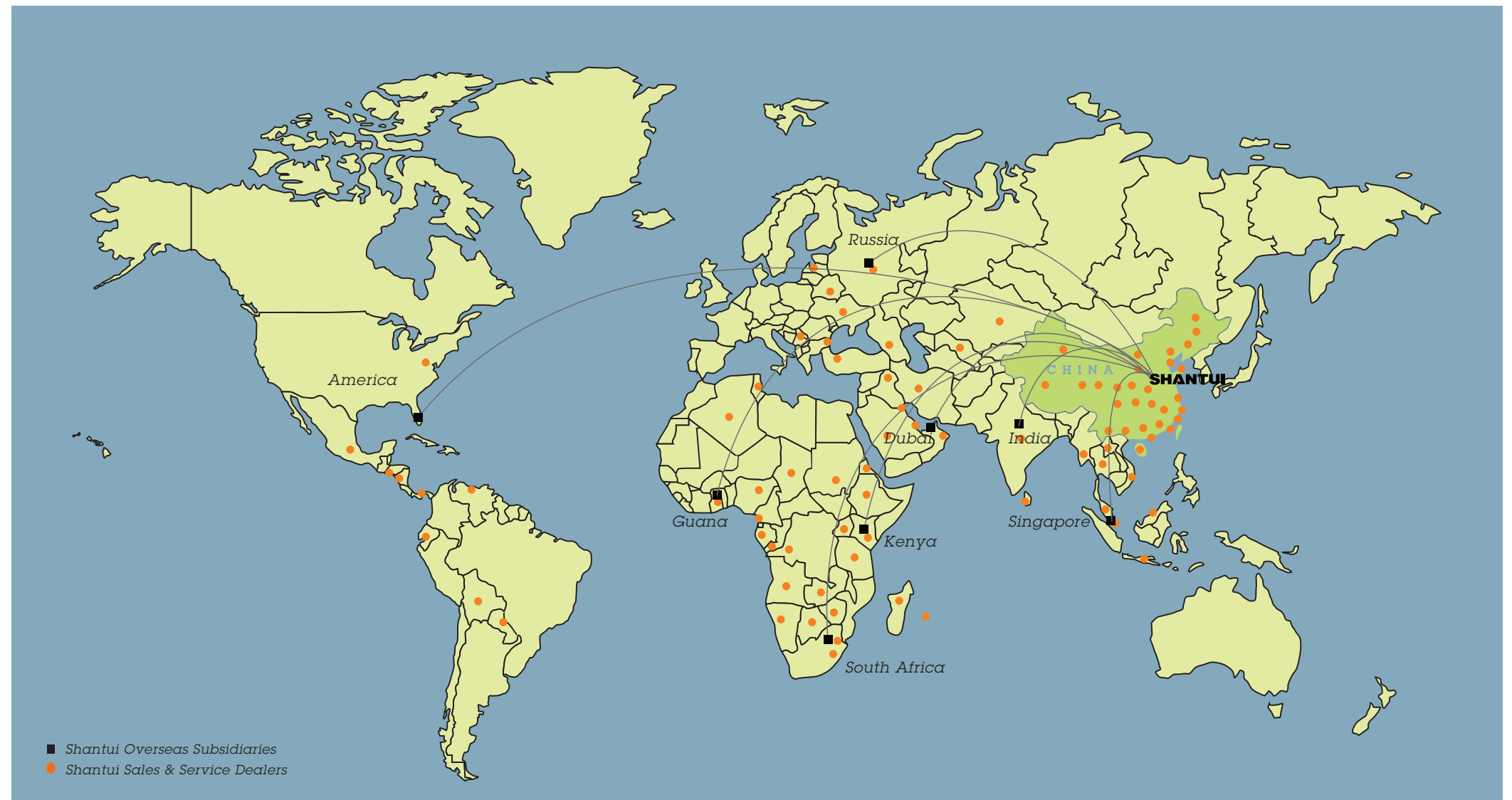
Shantui's global sales and service network now covers more than 120 countries and territories around the world.

Shantui made history in China with its Anytime, Anywhere Service. Today, Shantui is extending that pledge around the world. Wherever Shantui products are sold, our service network offers local training, a mature parts delivery system and superlative service.

THAT'S THE SHANTUI WAY!

Today Shantui value-Value That Works-can be found in a broadly diversified product line that includes the mighty bulldozer as well as pipe layers, rollers, compactors, graders, wheel loaders, excavators, concrete mixer trucks, concrete pump trucks, concrete pump trailers, truck-mounted line pumps and forklifts.

Contact your local Shantui distributor or dealer to learn more about the ways that Shantui brings value to a wide range of construction and concrete handling projects.



THE FIVE SHANTUI PRINCIPLES OF SERVICE

Service—The Shantui Way

1. A customer's time is precious.

We get it! Time is money. Shantui's service team puts you the customer first. We're committed to resolve all your machinery problems quickly. With the support of more than 70 dealers and 20 offices distributed around the world, Shantui has a complete after-sales service network and an unparalleled array of service equipment. With a team of more than 300 service engineers, a special hotline and a computer ERP information management system, we're committed to meet and exceed your service expectations.

2. Create customer value

You purchase Shantui products to earn profit and obtain value. Our service people bring comprehensive service abilities to each customer and guide you in mastering the operation, maintenance and repair of Shantui machines. We work with you so Shantui products work for you!

3. "Shantui service, anytime, anywhere"

Our goal: To make Shantui service a reality—anytime and anywhere.

4. It's all about you!

Centered on customer needs, Shantui has developed training programs, a technical enquiry system, customer visits, key project special services (free special coating service, on-site service, extended on-site service), so you know you've purchased not only a machine, but a complete service network.

5. Proactive service

Shantui service is proactive in all customer dealings. We come to your work site quickly and provide thorough, timely and quick service to save time and create value for you. That's The Shantui Way.