

STH1256A

PRODUCT SPECIFICATIONS

SANY



STANDARD FEATURES

- Large cab offers improved operator comfort and reduced fatigue
- Axle-mounted stabilizers allow for smoother frame leveling when deployed
- Wide-angle rear camera gives unobstructed view behind the machine
- Simple maintenance with easy fluid level check and convenient access to maintenance items with side-mounted engine

Gross Power
130 hp

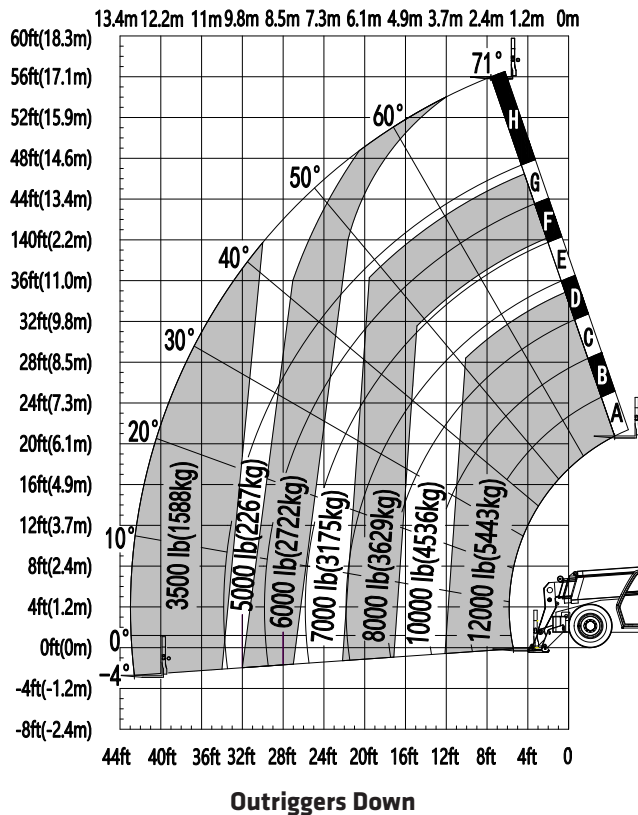
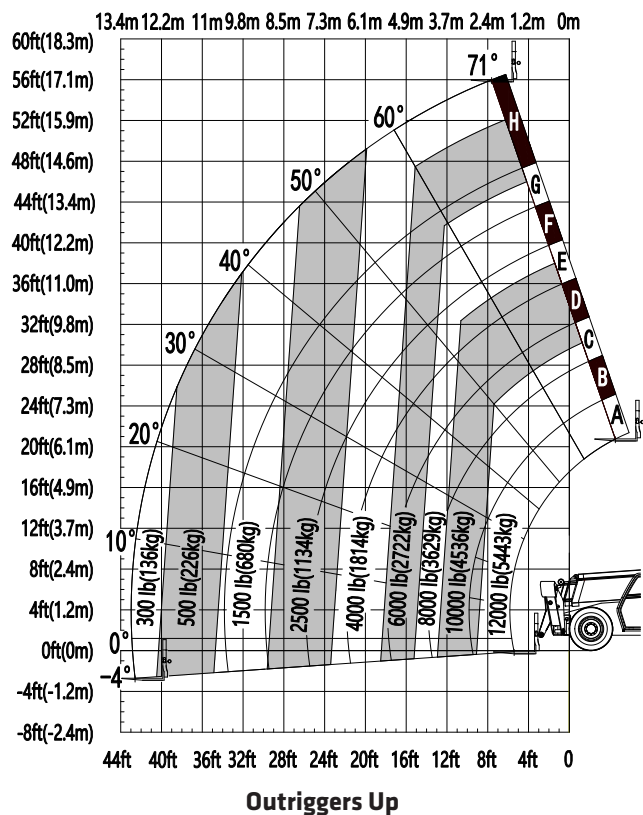
Max Lift Height
56' 2"

Max Lift Capacity
12,000 lb

Operating Weight
35,494 lb

PRODUCT SPECIFICATIONS

SANY STH1256A



Machine Parameters

DIMENSIONS

Maximum Lift Height	17.13 m	56' 2"
Maximum Forward Reach	13.08 m	42' 11"
Height, Stowed	2.56 m	8' 5"
Length, Stowed (without Forks)	6.28 m	20' 7"
Width	2.59 m	8' 6"
Wheelbase	3.49 m	11' 5"
Ground Clearance (Center)	0.46 m	1' 6"
Ground Clearance (Axle)	0.45 m	1' 6"
Weight	16,100 kg	35,494 lb

CAPACITIES

Power	97 kW	130 hp
Torque	488 Nm	360 lbf-ft
Electrical System	24 volt	
Hydraulic Tank Capacity	124 L	33 gal
Hydraulic System Capacity (with Tank)	159 L	42 gal
Fuel Tank Capacity	135 L	36 gal

PERFORMANCE

Maximum Lift Capacity	5,443 kg	12,000 lb
Lift Capacity at Maximum Height	3,175 kg	7,000 lb
Lift Capacity at Maximum Reach	1,588 kg	3,500 lb
Boom (Raise/Lower)	15 seconds	15 seconds
Boom (Extend/Retract)	19 seconds	19 seconds
Frame Leveling	+/- 10 degrees	
Maximum Drive Speed	32 kph	18 mph
Outside Turning Radius (4WS)	4.30 m	14' 1"
Auxiliary Hydraulic Flow	63 L/min	17 gpm
Auxiliary Hydraulic Pressure	17 MPa	2,466 psi
Standard Tire Size	400/75-28	

COMPONENTS

Engine	Cummins QSF3.8	
Transmission	Dana VDT12000	
Axles F/R	Dana 223	Dana 213
Hydraulic Pump	Kawasaki Load Sense Piston Pump	
Hydraulic Manifold	Parker	