



SANY HEAVY MACHINERY LTD

<http://www.sanyglobal.com>

This manual was printed in 2023. The product information may have been changed when you read it. Products (including specific configuration, detail, etc.) are based on the specific models and products applicable to markets outside China, which are displayed and sold by agents. For more details, please visit the local authorized agent of SANY Heavy Machinery Ltd.



# SY215CLC

**Rated power**

122kW/2300rpm

**Bucket capacity**

0.93m<sup>3</sup>

**Total weight**

22600kg



Strong power

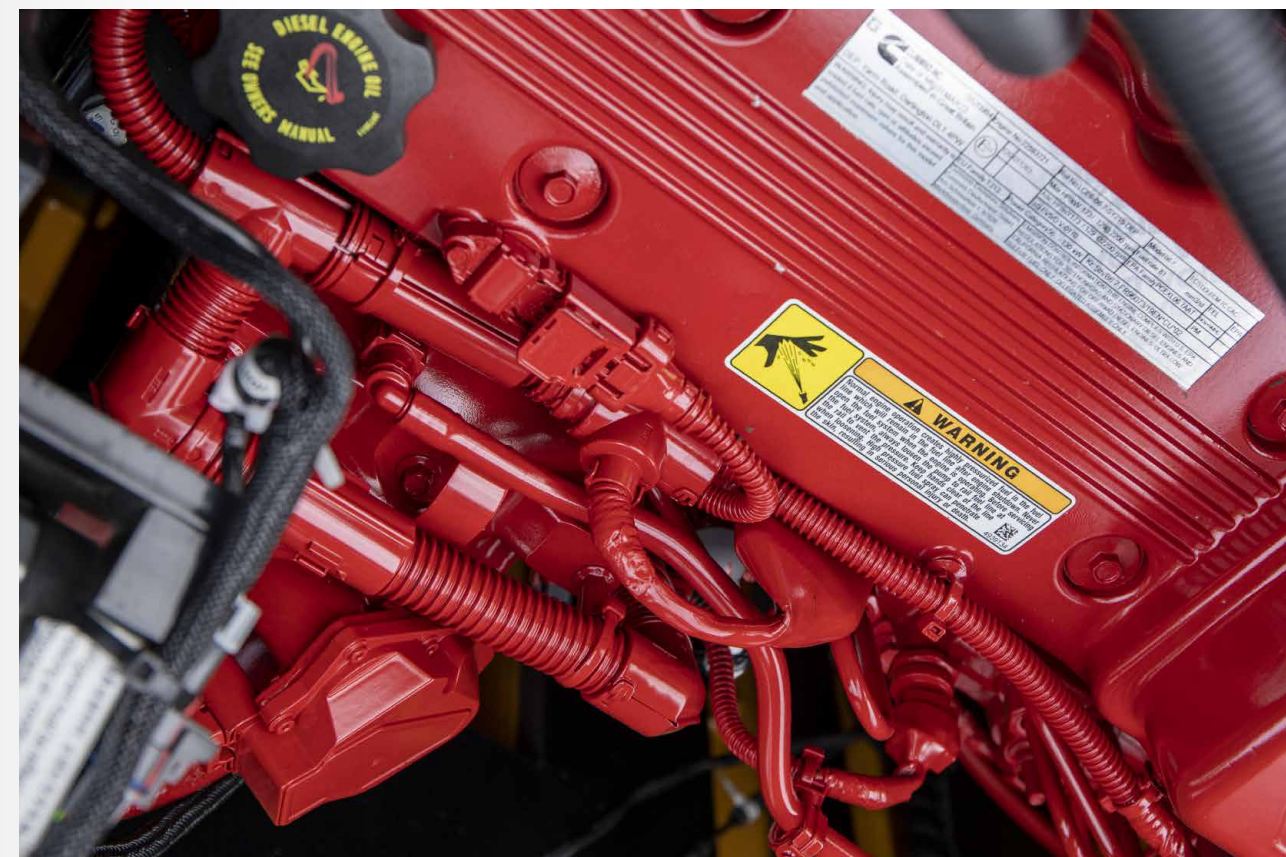


Super long life



Low maintenance cost





## Strong power

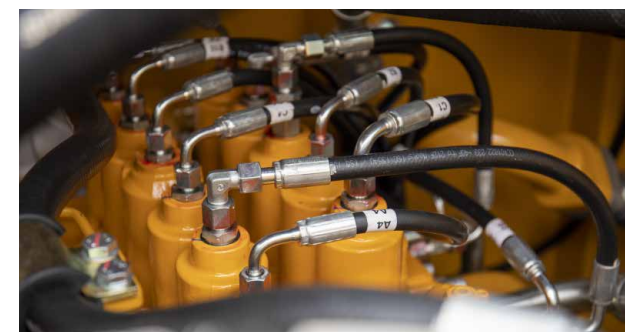
### ► Engine

The highly efficient engine with common rail technology guarantees excellent performance. Four different operating modes for the various operating conditions precisely adjust the engine and hydraulic power to the requirements. This improves the excavator's response behaviour and ensures lower fuel consumption and reduced emissions.



### ► Main pump

The position-controlled hydraulic system adjusts the required pressure and oil quantity according to requirements. The powerful, variable piston pumps reach a flow rate of 2 x 222 l/min and therefore achieve a very high level of efficiency at a low engine speed.



### ► Main valve

The designation is according to the needs of customers, which has "high reliability, small pressure loss, high flow distribution efficiency, smooth compound action" and other outstanding advantages, to help customers easily solve heavy work.



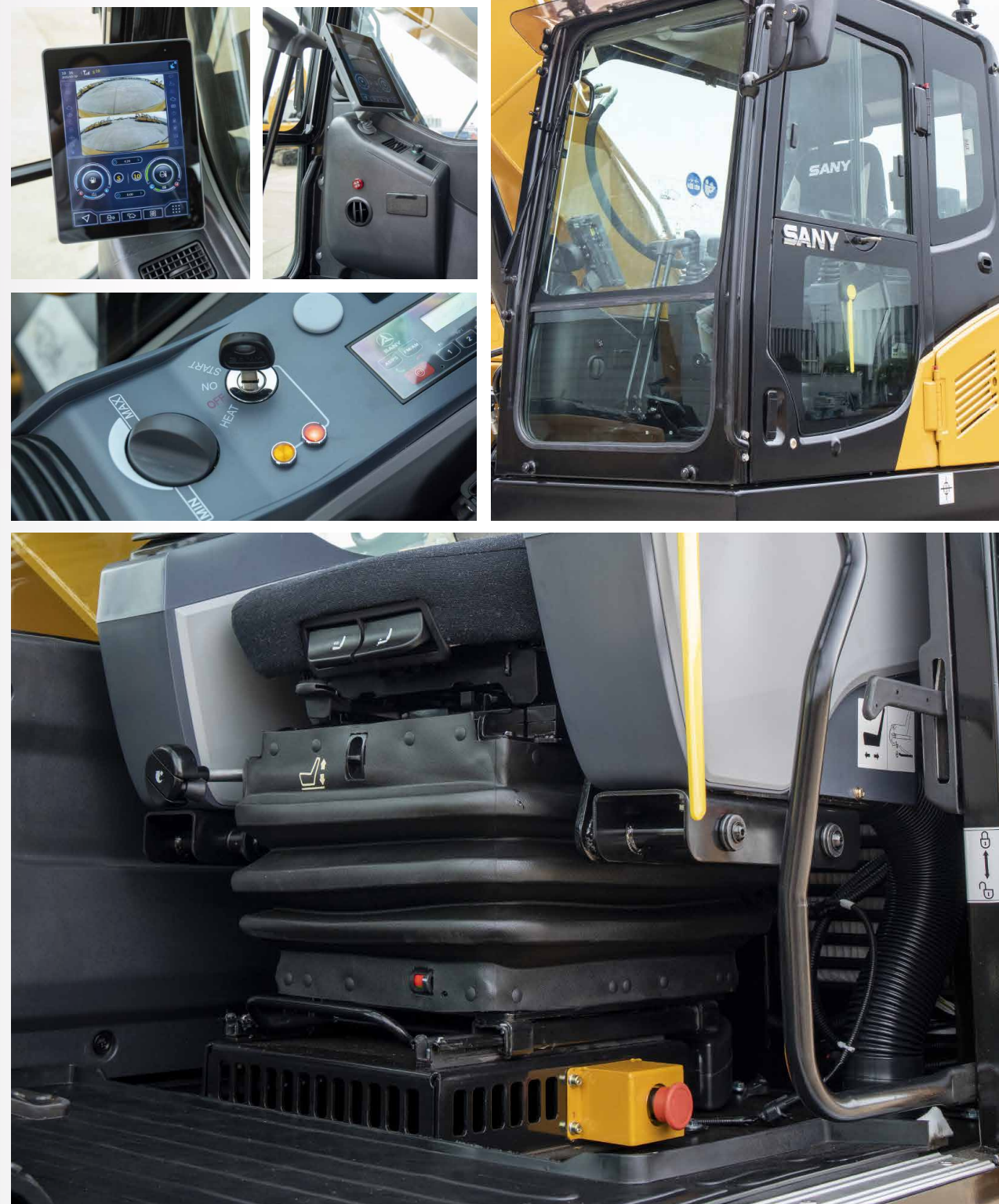


## Comfortable driving

For drivers to fully concentrate on their work, they first need to be sitting comfortably. The individually adjustable, air-suspension seat offers a comfortable workstation from which all of the controls are within easy reach.

The multifunctional control levers are located at the centre. This makes it possible to reliably and precisely control the attachment devices, directly relaying the control commands without delay.

Includes the large monitor which can be set to several languages, the automatic climate control system, the powerful heating, the radio with an additional USB port for the driver's own audio devices, etc.





# Powerful in performance

## .01

### Components

High quality and tried & tested the water-cooled Cummins diesel engine with common rail technology and AdBlue system guarantees reliable performance, even under tough working conditions. The complete package is rounded off by the finely tuned Kawasaki hydraulic system.



## .02

### Dimensions

Agile power – the SY215CLC works through its programme quickly and with great power. This excavator has great power reserves in its 22 tonnes. The machine is mounted on a stable HD undercarriage so that it can be used to the full.



## .03

### Quality

The machines have a great deal of work to do during their tough day-to-day work on construction sites. This is why from the design stage, to selecting the materials used, quality and conducting the final checks all excavators by SANY are designed to be robust. For instance, all welded seams are computer controlled by robots this maximum precision ensures stability and reliability.



## .04

### Safety

Safety as a production factor– it is only possible to work cost-effectively if you work safely. This is why the large safety package has everything included as standard, from a travel alarm to the rotating beacon, and from the boom safety valve to the overload warning for lifting and the engine emergency switch.



## .05

### User experience

Comfortable workstation – the cabin of the SY215CLC leaves nothing to be desired. All of the controls are within easy reach from the airsuspension seat which supports the driver's back. Maintenance and service support is also easy to reach: Thanks to the large and easily accessible service doors and clear layout of the most important components, this work is quick and easy to complete.



## .06

### Stability

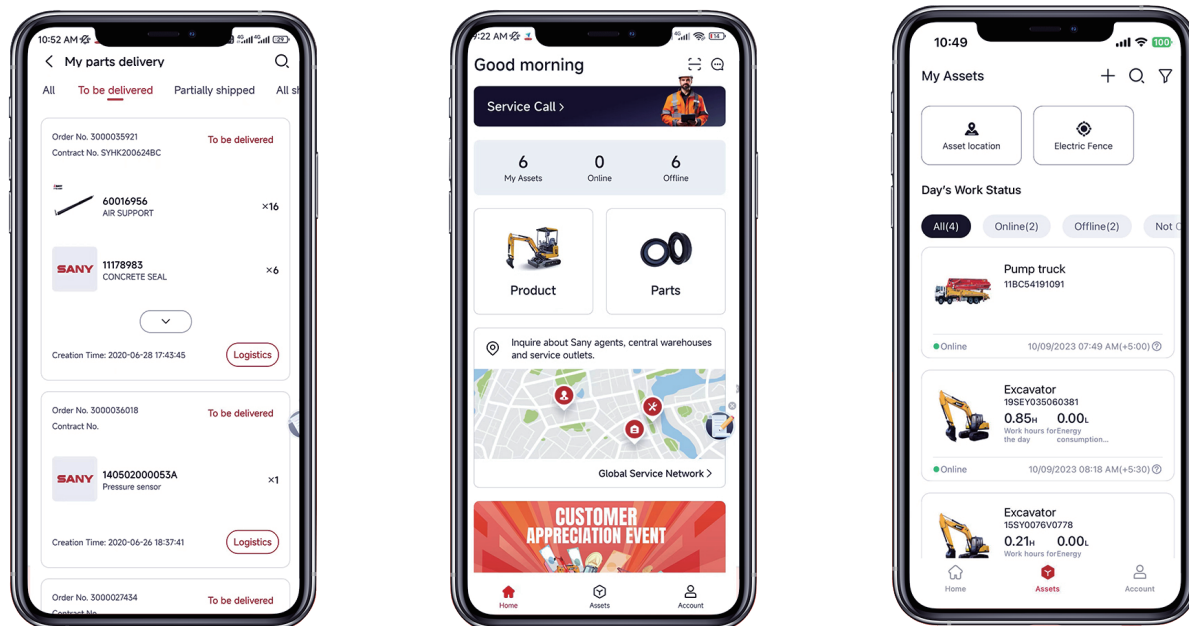
The SY215CLC's particularly stable heavy-duty undercarriage provides the maximum possible stability. Its welded reinforcements and the use of robust, high strength steel ensure minimal wear, even when used continually under the maximum load. The steel chains used also offer the highest quality standard – for a stable foundation on any surface.





# MySANY APP

## Easy use, quick response



### Quick Parts Access

- View parts manuals
- View parts availability
- Check equipment & parts order status

### Fleet Management

- Check equipment working condition
- Monitor equipment energy consumption
- Set up e-fence

### Streamlined Service

- One-click to initiate service request
- Check global service network
- View local service team's phone number & email



Scan to download!

# Complete research development and test system

It has established complete machine endurance test center with full functions. Each model of excavator must be subjected to over 2,000h field excavating test.

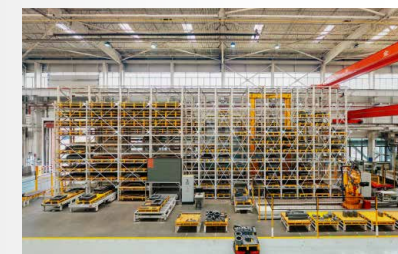
Key components like working device, cab and hydraulic components etc. must be subject to fatigue test over 800,000 times.



# Advanced manufacturing technology

SANY has RGV assembling line and fullautomatic welding robots, and possesses high precision machining equipment and precise machining center.

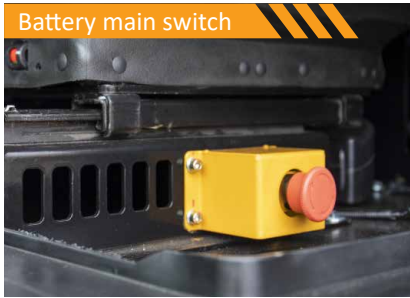
SANY' s manufacturing and assembling lines won five-star national site in 2013 and national quality award in 2014. In 2023, SANY Mini Excavator Factory was awarded as the intelligent factory.







Safety facility



Technical specifications

Specification		Main performance	
Rated weight	22600 kg	Swingspeed	10.7 rpm
Model	CUMMINS QSB6.7	Max. travel speed	High 6.0 km/h, slow 3.5 km/h
Type	Water-cooled, 6 cylinder, with commonrail and Adblue	Max. travel force	208 kN
Rated power	122kW / 2300rpm	Gradeability	35°
Maximum torque	732Nm / 1500rpm	Bucket capacity	0.93 m³
Displacement	6700 ccm	Groundpressure	0.47 kg/cm²
Batteries	2×12 V	Bucket digging force ISO	138 kN
		Groundpressure	102 kN

Hydraulic system		Relief valve settings	
Mainpump	2 x variable-piston-pump with electronic positive control	Implement circuit	343 bar
Max. oilflow	2 x 222 L/min	Power boost	373 bar
Travelmotor	2 speed axial piston motor with planetary reducer and automatic multi-disc brake	Swing circuit	275 bar
Swingmotor	Axial piston motor with planetary reducer and automatic holding brake	Travle circuit	343 bar
		Pilot pressure	39 bar

Service refill capacities		Under and upper structure	
Fuel tank	340 L	Boom length	5700 mm
Engine coolant	27.6 L	Arm length	2925 mm
Engine oil	27 L	Bottomrollers	9
Drive (per side)	5.5 L	Toprollers	2
Adblue	189 L	Rotation device	Planetary gear reducer driven by an axial piston motor, automatic hydraulic released slewing brake
Hydraulic oil tank	230 L		

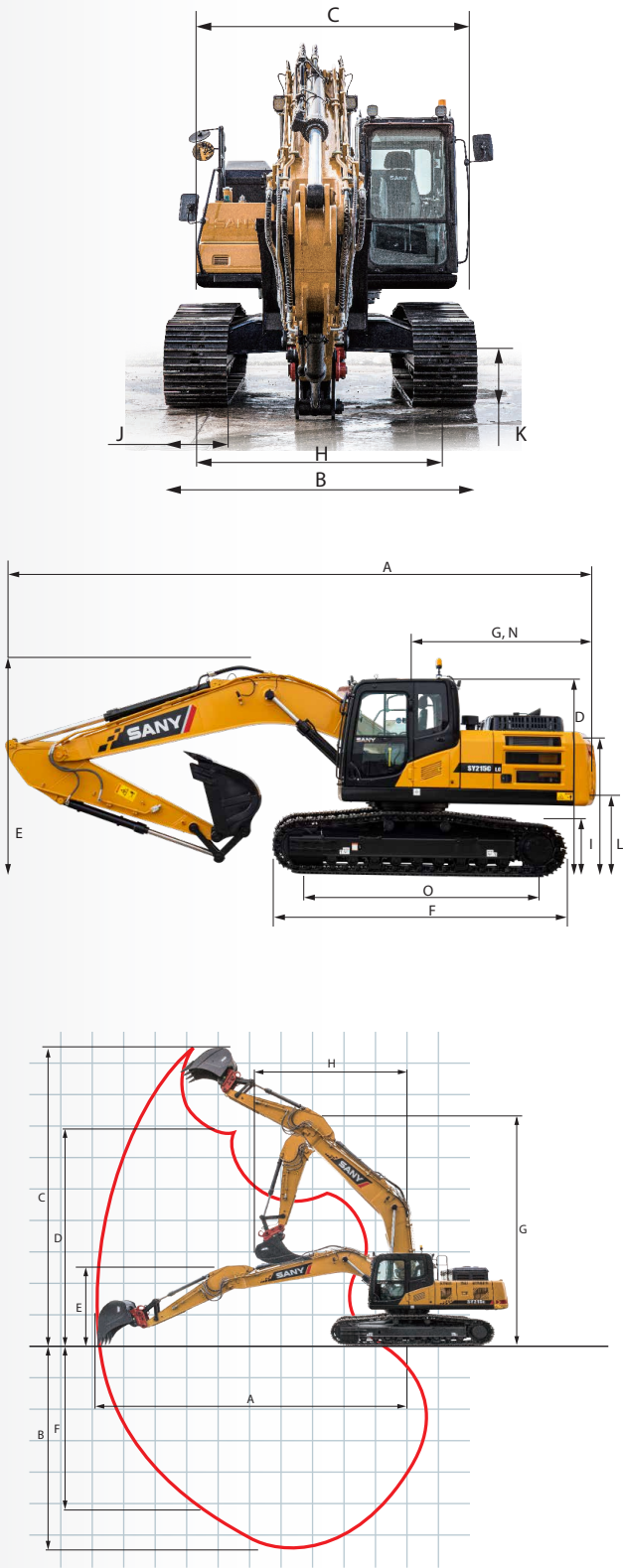


# Table of lifting capacity

LIFTING CAPACITIES*											
Load point height		Radius								Max. digging reach	
		3.0m		4.5m		6.0m		7.5m		Capacity	
											mm
7.5m	kg					4319	4319			3736	6100
6.0m	kg					4433	4433			3542	7200
4.5m	kg					4973	4973	4774	3547	3497	7900
3.0m	kg			7365	7279	5823	4790	4800	3445	3662	8300
1.5m	kg			9085	6787	6476	4554	4660	3331	3890	8300
0	kg	6483	6483	9737	6526	6269	4388	4559	3248	4092	8100
-1.5m	kg	10665	10665	9632	6444	6200	4319	4532	3225	4453	7600
-3.0m	kg	14488	12609	9719	6509	6233	4358			5324	6700
-4.5m	kg	12167	12617	8569	6733					7760	5300

\* at 600 mm track pads width

# Machine dimensions



Overall dimensions (mm)	SY215CLC
A. Transport length	9728
B. Transport width *	2980
C. Upperstructure carriage	2710
D. Height over cabin/ROPS	2960
E. Height of Boom – transport	3370
F. Overall length of crawler	4450
G. Tail length	2890
H. Track gauge	2380
I. Track height	923
J. Track pads width	600 700 800
k. Min. ground clearance	480
L. Counterweigh clearance	1090
M. Engine cover height	2630
N. Tail swing radius	2890
O. Center distance of tumbler	3640

Operation range (mm)	SY215CLC
A. Max. digging reach	9950
B. Max. digging depth	6600
C. Max. digging Height	9570
D. Max. dumping height	6700
E. Max. vertical digging depth	5800
F. Overall height over arm by min. swing radius	7680
G. Min. swing radius	3730

# Standard configuration

Operators comfort / cabine		Working equipment		Safety	
Heater	•	Boom and arm load holding valves with overload indicator	•	Battery master switch	•
Automatic air conditioning C/H	•	Double acting circuit for hydraulic quick coupler with piping	•	Travel alarm	•
Radio and speaker	•	Breaker&Shear line proportional on Joystick with piping	•	Warning beacon	•
Armrests (adjustable)	•	Rotation line proportional on Joystick with piping	○	Camera	•
Airsuspensio seat	•	Flow adjustment for attachments	•	Handrails	•
Heated seat	•	Short arm	○	Lockable hoods	•
Wiper	•			Lockablge fuel cap	•
Sprayer f. wiper	•				
AUX 1 on Joystick	•				
AUX 2 on Joystick	•				
Removable front-window	•				
Sky light openable	•				
Integrated cooling box	•				

Undercarriage		Working lights	
Steel tracks 600	•	Lights – front (LED)	•
Holes/loops for fixing	•	Lights – boom (LED)	•
		Lights – platform (LED)	•
		Lights – back (LED)	•
Engine		Hydraulic system	
Auto idle	•	Swing brake	•
Diesel filter	•	2 speed travel	•
DOC	•	Piping for additional hydraulic function AUX 1	•
		Piping for additional hydraulic function AUX 2	•
		Hydr. Pre-pressure operating joysticks	•
		Mainfilter	•

• stands for standard configurations    ○ stands for optional configurations