



SANY Industrial Park
Dongcheng Avenue,Kunshan Economic and Technological Development Zone, Jiansu Province,China
Postal Code: 215300

Reminder:
Any change in the technical parameters and configuration due to product modification or upgrade may occur without prior notice. The machine in the picture may include additional equipment. This brochure is for reference only, and goods in kind shall prevail.
Copyright at SANY. No part of this brochure may be copied or used for any purpose without written approval from SANY.

© Version 2025-07-10



Contact SANY Group



Follow SANY Group

SANY HEAVY MACHINERY | www.sanyglobal.com

SANY[®]
QUALITY CHANGES THE WORLD



Engine power
145 kW/2000 rpm

Bucket capacity
1.35/1.55 m³

Operating weight
26200 kg

SY265LC
Sany All-New Excavator



Read E-brochure

HIGHLIGHTS



STRONG POWER

Engine

The highly efficient engine with common rail technology guarantees excellent performance. Three different operating modes for the various operating conditions precisely adjust the engine and hydraulic power to the requirements. This improves the excavator's response behaviour and ensures lower fuel consumption and reduced emissions.

Main pump

The position-controlled hydraulic system adjusts the required pressure and oil quantity according to requirements. The powerful, variable piston pumps reach a flow rate of 2 x 260 L/min and therefore achieve a very high level of efficiency at a low engine speed.

Main valve

The designation is according to the needs of customers, which has "high reliability, small pressure loss, high flow distribution efficiency, smooth compound action" and other outstanding advantages, to help customers easily solve heavy work.

HIGHLIGHTS

COMFORTABLE DRIVING



POWERFUL IN PERFORMANCE

.01

Components

High quality and tried & tested the water-cooled Cummins diesel engine with common rail technology and AdBlue system guarantees reliable performance, even under tough working conditions. The complete package is rounded off by the finely tuned Kawasaki hydraulic system.



.02

Dimensions

Agile power – the SY265LC works through its programme quickly and with great power. This excavator has great power reserves in its 26 tones. The machine is mounted on a stable HD undercarriage so that it can be used to the full.



.03

Quality

The machines have a great deal of work to do during their tough day-to-day work on construction sites. This is why from the design stage, to selecting the materials used, quality and conducting the final checks all excavators by SANY are designed to be robust. For instance, all welded seams are computer controlled by robots this maximum precision ensures stability and reliability.



.04

Safety

Safety as a production factor – it is only possible to work cost-effectively if you work safely. This is why the large safety package has everything included as standard, from a travel alarm to the rotating alarm, and from the boom safety valve to the overload warning for lifting and the engine emergency switch.



.05

User experience

Comfortable workstation – the cabin of the SY265LC leaves nothing to be desired. All of the controls are within easy reach from the airsuspension seat which supports the driver's back. Maintenance and service support is also easy to reach, Thanks to the large and easily accessible service doors and clear layout of the most important components, this work is quick and easy to complete.



.06

Stability

The SY265LC's particularly stable heavy-duty undercarriage provides the maximum possible stability. Its welded reinforcements and the use of robust, high strength steel ensure minimal wear, even when used continually under the maximum load. The steel chains used also offer the highest quality standard – for a stable foundation on any surface.





Complete research & development and test system

SANY has established complete machine endurance test center with full functions. Each model of excavator must be subjected to over 2,000h field excavating test.

Key components like working device, cab and hydraulic components etc. must be subject to fatigue test over 800,000 times.



Safety facility

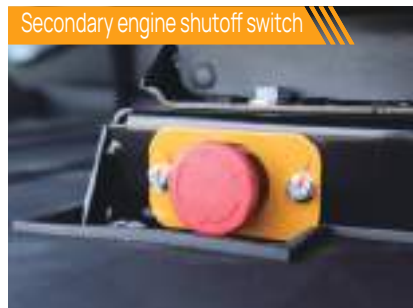
Anti-slip pedal



Traveling alarm



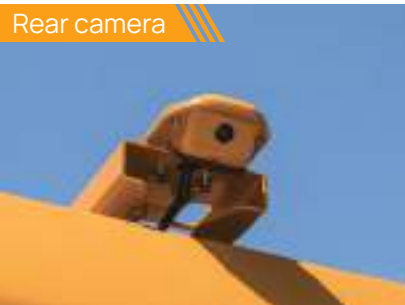
Secondary engine shutoff switch



Safety hammer



Rear camera



LED light



Advanced manufacturing technology

SANY has RGV assembling line and full automatic welding robots, and possesses high precision machining equipment and precise machining center.

SANY's manufacturing and assembling lines won five-star national site in 2013 and national quality award in 2014. In 2023, SANY Mini Excavator Factory was awarded as the intelligent factory.



TECHNICAL SPECIFICATIONS

SPECIFICATION	UNIT	VALUE
Operating weight	kg	26200
Bucket capacity	m ³	1.35/1.55
Engine	-	Stage V
Model	-	QSB6.7
Type	-	Water-cooled, 6 cylinder, with commonrail and Adblue
Engine power	kW/rpm	145/2000
Maximum torque	N·m/rpm	847/1500
Displacement	ccm	6700
Batteries	V	2x12

HYDRAULIC SYSTEM	UNIT	VALUE
Mainpump	-	2 x variable-piston-pump with electronic positive control
Max. oilflow	L/min	2 x 260
Travelmotor	-	2 speed axial piston motor with planetary reducer and automatic multi-disc brake
Swingmotor	-	Axial piston motor with planetary reducer and automatic holding brake

SERVICE REFILL CAPACITIES	UNIT	VALUE
Fuel tank	L	440
Engine coolant	L	40
Engine oil	L	27
Drive (per side)	L	7.8
Adblue	L	38
Hydraulic oil tank	L	272

MAIN PERFORMANCE	UNIT	VALUE
Swingspeed	rpm	11.8
Max. travel speed	km/h	5.9/3.7
Max. travel force	kN	222.7
Grade ability	°	35°
Ground pressure	kg/cm ²	0.51
Bucket digging force	KN	167.3
Arm crowd force	kN	132.3

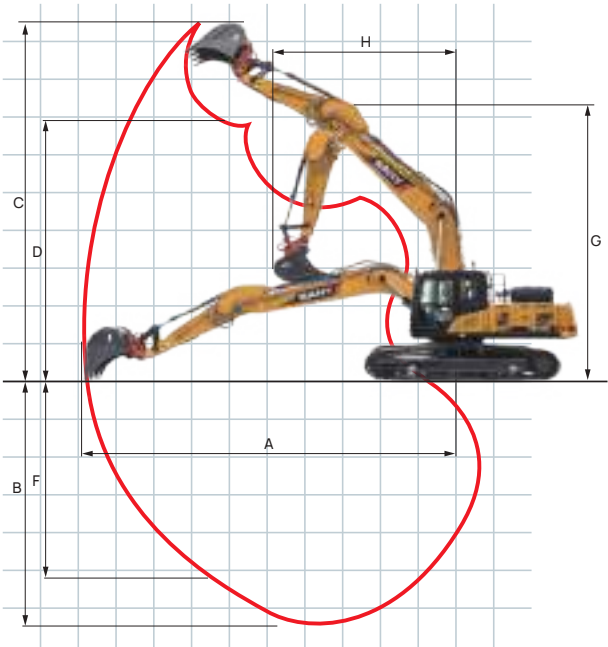
RELIEF VALVE SETTINGS	UNIT	VALUE
Implement circuit	bar	343
Power boost	bar	373
Swing circuit	bar	275
Travle circuit	bar	343
Pilot pressure	bar	39

UNDER AND UPPER STRUCTURE	UNIT	VALUE
Boom length	mm	5900
Arm length	mm	2950
Bottomrollers	-	9
Toprollers	-	2
Rotation device	-	Planetary gear reducer driven by an axial piston motor, automatic hydraulic released slewing brake

MACHINE DIMENSIONS

OVERALL DIMENSIONS (MM)	SY265LC
A. Transport length	10243
B. Transport width	3190
C. Upperstructure carriage	2995
D. Height over cabin/ROPS	3147
E. Height of Boom – transport	3404
F. Overall length of crawler	4636
G. Tail length	3143
H. Track gauge	2590
I. Track height	955
J. Track pads width	600
k. Min. ground clearance	470
L. Counterweigh clearance	1105
M. Engine cover height	2640
N. Tail swing radius	3143
O. Center distance of tumblers	3845

MAIN PERFORMANCE	SY265LC
A. Max. digging reach	10225
B. Max. digging depth	6705
C. Max. digging Height	9745
D. Max. dumping height	6715
F. Max. vertical digging depth	5675
G. Overall height over arm by min. swing radius	8020
H. Min. swing radius	3800



STANDARD CONFIGURATION

ENGINE SYSTEM	
Automatic engine speed control	●
Automatic engine idle shutdown	●
Electric refueling pump	●
Electric cooling fans	○

HYDRAULIC SYSTEM	
Semi-electronic main control valve	●
Safety valve	○
Mode switch	○ (us)
Boom and stick regeneration circuits	●
Auto digging boost	●
Quick coupler circuit	○
AUX 1 & AUX 2	●

CABIN	
ROPS Certification	●
Heated air suspension seat	●
CVG deluxe heated and cooled air suspension seat	Coming soon
10" display	●
Key panel	●
Parallel wiper	●
Keyless button	●
Top and openable front guard	○
Sun roller blind	● (front + roof) ○ (right)

ELECTRICAL SYSTEM	
Maintenance free battery	●
LED left/right-side boom lights, cab lights	●
Programmable time-delay LED working lights	●
Quick hitch of quick coupler	●

SAFETY AND SECURITY	
Rear and right cameras	●
Ground-level engine shut-off switch	○
Overload alarm	●
360° visibility	○
Swing/travelling alarm	●
Seat belt alarm	○

BOOM&ARM&BUCKET&UNDERCARRIAGE	
1.35m³ Stone Bucket 1	○
1.55m³ Earthmoving Bucket 2	●
No bucket attachment 3	○
2.95m Arm	●
3.5m Arm	○
600 mm triple ribbed track 1	●
700 mm triple ribbed track 2	○
800 mm triple ribbed track 3	○
Standard undercarriage (gauge 2390mm)	●
Widening undercarriage (gauge 2590mm)	○

SANY OVERSEAS SERVICE

GLOBAL SUPPORT
ANYTIME
ANYWHERE

900+

 Overseas service centers

3500+

 Professional technical service engineers

365×24

 Support

Service Center

Tel: +86 4006098318

Mail: CRD@sany.com.cn

WhatsApp: +86 19908478631 (Only WhatsApp)

My SANY

On-demand professional equipment repair services available anytime, anywhere, ensuring rapid response and efficient solutions.



Download MySANY for a comprehensive, all-in-one experience!

 DOWNLOAD ON THE App Store

 GET IT ON Google Play

 DOWNLOAD APK 6.0+



