



SANY Industrial Park
Dongcheng Avenue,Kunshan Economic and Technological Development Zone, Jiansu Province,China
Postal Code: 215300

Reminder:
Any change in the technical parameters and configuration due to product modification or upgrade may occur without prior notice. The machine in the picture may include additional equipment. This brochure is for reference only, and goods in kind shall prevail.
Copyright at SANY. No part of this brochure may be copied or used for any purpose without written approval from SANY.

© Version 2025-08-28



Contact SANY Group



Follow SANY Group

SANY HEAVY MACHINERY | www.sanyglobal.com

SANY[®]
QUALITY CHANGES THE WORLD



Engine power
209 kW/2100 rpm

Bucket capacity
1.7 m³

Operating weight
33600 kg

SY335CLC
Sany Excavator

HIGHLIGHTS

STRONG
POWER

Engine

The highly efficient engine with common rail technology guarantees excellent performance. Three different operating modes for the various operating conditions precisely adjust the engine and hydraulic power to the requirements. This improves the excavator's response behaviour and ensures lower fuel consumption and reduced emissions.

Main pump

The position-controlled hydraulic system adjusts the required pressure and oil quantity according to requirements. The powerful, variable piston pumps reach a flow rate of 2 x 281 L/min and therefore achieve a very high level of efficiency at a low engine speed.

Main valve

The designation is according to the needs of customers, which has "high reliability, small pressure loss, high flow distribution efficiency, smooth compound action" and other outstanding advantages, to help customers easily solve heavy work.

HIGHLIGHTS

COMFORTABLE DRIVING



For drivers to fully concentrate on their work, they first need to be sitting comfortably. The individually adjustable, air-suspension seat offers a comfortable work station from which all of the controls are within easy reach. The multifunctional joysticks make it easy to control the attachment devices reliably and precisely, directly relaying the control commands without delay.



The intelligent 10-inch touch screen display is highly visually striking. Keyless start, multi-functional panel, electrically heated air-suspended seats, and the application of automotive electronic technology have comprehensively enhanced the sense of technology and comfort.

POWERFUL IN PERFORMANCE

.01

Fully electronically controlled

The bidirectional auxiliary pipeline system and the hammer-shear pipeline achieve full electric control of bidirectional overflow pressure and flow.



.02

New shape

Adopting the design of mining-type body panels, top covers, counterweights and toolboxes, combined with the process design of double-layer door panels, the height of the body panels has been increased from 780 to 1138, and the overall shape continues the tough style of mining machines.



.03

Quality

The machines have a great deal of work to do during their tough day-to-day work on construction sites. This is why from the design stage, to selecting the materials used, quality and conducting the final checks all excavators by SANY are designed to be robust. For instance, all welded seams are computer controlled by robots this maximum precision ensures stability and reliability.



.04

Convenient maintenance

The increased operation space for replacing maintenance parts and the convenient maintenance design tailored for the harsh working conditions in mines ensure worry-free operation. Customers can complete daily inspections without boarding the plane, achieving ground-based daily maintenance.



.05

Personalization

360-degree panoramic imaging, intelligent lighting system - "Accompany You Home", air conditioning with silicone oil clutch control and other personalized configurations further enhance the practicality and competitiveness of the product.



.06

Stability

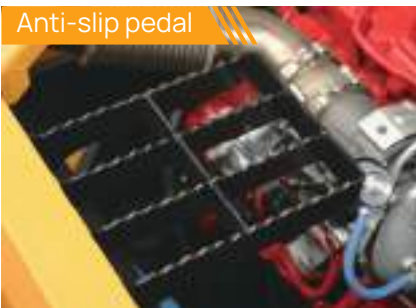
The SY335CLC's particularly stable heavy-duty undercarriage provides the maximum possible stability. Its welded reinforcements and the use of robust, high strength steel ensure minimal wear, even when used continually under the maximum load. The steel chains used also offer the highest quality standard - for a stable foundation on any surface.





Safety facility

Anti-slip pedal



Traveling alarm



Secondary engine shutoff switch



Safety hammer



Rear camera



LED light



Complete research & development and test system

SANY has established complete machine endurance test center with full functions. Each model of excavator must be subjected to over 2,000h field excavating test.

Key components like working device, cab and hydraulic components etc. must be subject to fatigue test over 800,000 times.



Advanced manufacturing technology

SANY has RGV assembling line and full automatic welding robots, and possesses high precision machining equipment and precise machining center.

SANY's manufacturing and assembling lines won five-star national site in 2013 and national quality award in 2014. In 2023, SANY Mini Excavator Factory was awarded as the intelligent factory.



TECHNICAL SPECIFICATIONS

| SPECIFICATION | UNIT | VALUE |
|------------------|----------------|---|
| Operating weight | kg | 33600 |
| Bucket capacity | m ³ | 1.7 |
| Engine | - | Stage V |
| Model | - | L9 |
| Type | - | Electronic control direct injection 4-cylinder 4-stroke, turbocharged intercooled, water-cooled |
| Engine power | kW/rpm | 209/2100 |
| Max. torque | N·m/rpm | 1472/1400 |
| Displacement | L | 8.9 |
| Batteries | V | 2x12 |

| HYDRAULIC SYSTEM | UNIT | VALUE |
|------------------|-------|--|
| Type | - | Variable-capacity piston pump |
| Max. flow | L/min | 2 x 281 |
| Travel motor | - | 2*axial piston motor with parking brake |
| Swing motor | - | 1*axial piston motor with swing holding brake |

| SERVICE REFILL CAPACITIES | UNIT | VALUE |
|---------------------------|------|-------|
| Fuel tank | L | 540 |
| Engine coolant | L | 36 |
| Engine oil | L | 21 |
| Swing drive | L | 10.5 |
| Final drive (each side) | L | 8.5 |
| Hydraulic oil tank | L | 300 |

| MAIN PERFORMANCE | UNIT | VALUE |
|----------------------|------|---------|
| Swing speed | rpm | 10.8 |
| Max. travel speed | km/h | 5.4/3.2 |
| Max. travel force | kN | 281 |
| Grade ability | - | 70%/35° |
| Ground pressure | kPa | 60.3 |
| Bucket digging force | kN | 153 |
| Arm crowd force | kN | 204 |

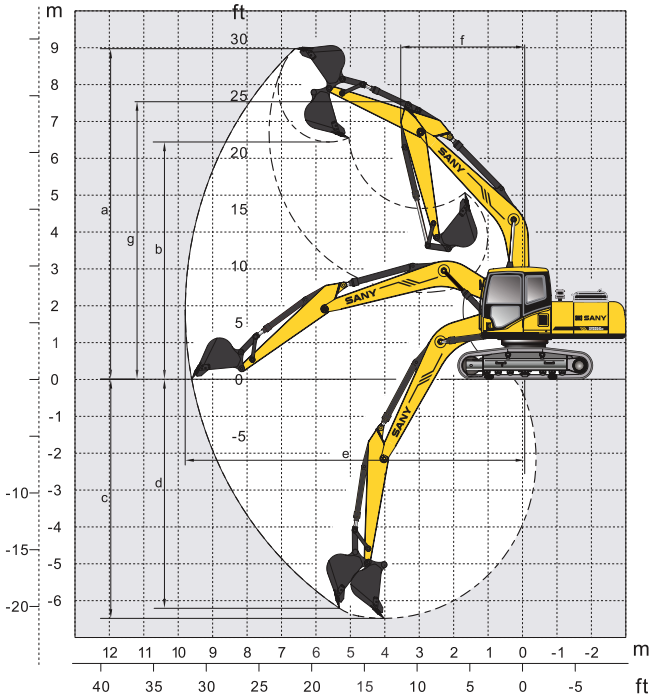
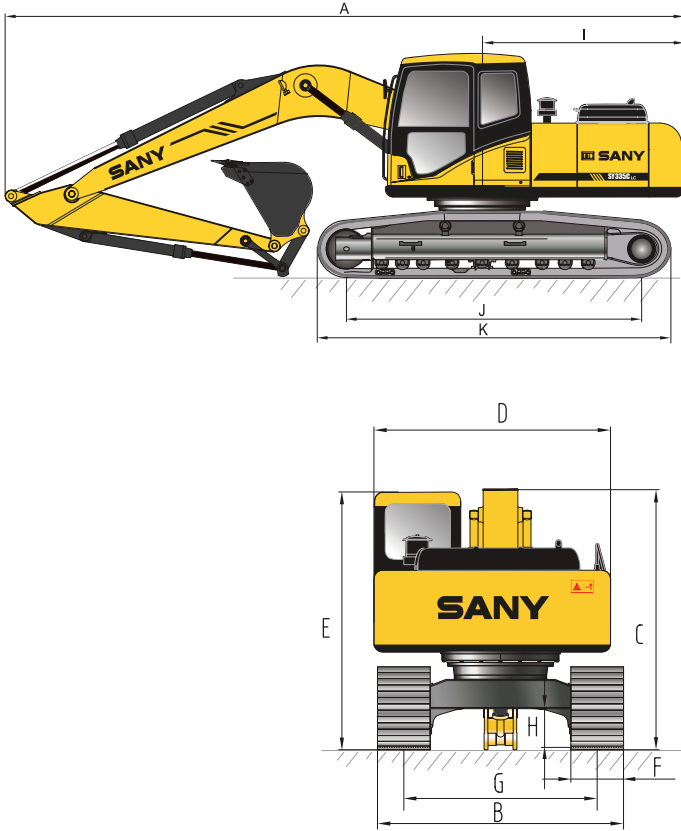
| RELIEF VALVE SETTINGS | UNIT | VALUE |
|-----------------------|------|-------|
| Implement circuit | bar | 343 |
| Power boost | bar | 373 |
| Swing circuit | bar | 275 |
| Travel circuit | bar | 343 |
| Pilot pressure | bar | 39 |

| UNDERCARRIAGE | UNIT | VALUE |
|---------------------------------|------|-------|
| Track shoe width | mm | 800 |
| Number of track shoes(per side) | mm | 49 |
| Carrier roller (per side) | - | 2 |
| Track roller (per side) | - | 9 |

MACHINE DIMENSIONS

| OVERALL DIMENSIONS | UNIT | VALUE |
|--------------------------------|------|--------|
| A. Transport Length | mm | 10667 |
| B. Transport Width | mm | 3396 |
| C. Transport Height | mm | 3470 |
| D. Upperstructure Width | mm | 3147.4 |
| E. Blade Height | mm | - |
| F. Standard Track Shoe Width | mm | 800 |
| G. Track Gauge | mm | 2590 |
| H. Minimum Ground Clearance | mm | 550 |
| I. Tail Swing Radius | mm | 3315 |
| J. Center distance of tumblers | mm | 4140 |
| k. Overall length of crawler | mm | 5055 |
| Boom Length | mm | 6150 |
| Arm Length | mm | 3200 |

| WORKING RANGE | UNIT | VALUE |
|--------------------------------|------|-------|
| a. Max. Digging Height | mm | 10497 |
| b. Max. Dumping Height | mm | 7359 |
| c. Max. Digging Depth | mm | 6815 |
| d. Max. Vertical Digging depth | mm | 5800 |
| e. Max. Digging Reach | mm | 10870 |
| f. Min. Swing Radius | mm | 4000 |
| g. Height at Min. Swing Radius | mm | 8405 |



STANDARD CONFIGURATION

| OPERATORS ENVIRONMENT | | |
|---|--|---|
| ROPS cabin mounted on silicone rubber | | ● |
| Short joystick + Multi-functions equipped | | ● |
| Air suspension heating seat | | ● |
| Multi Language Display | | ● |
| Air conditioning C/H | | ● |
| Radio with USB | | ● |
| 12V/24V outlets | | ● |
| Cup holder | | ● |
| Document compartment | | ● |

| SAFETY | | |
|--------------------------------------|--|---|
| Battery master switch | | ● |
| Fire-Extinguisher | | ● |
| Emergency Hammer | | ● |
| Rear camera | | ● |
| Travel Alarm and Beacon | | ● |
| Overload warning for lifting | | ● |
| Safety valves Boom | | ● |
| Engine emergency cut off from ground | | ● |
| User Manual language (EN) | | ● |

| WORKING EQUIPMENT | | |
|---|--|---|
| Boom ■Standard 6150mm | | ● |
| Arm ■Standard 3200mm | | ● |
| Hydraulic QC line controlled on joystick | | ● |
| AUX Line- B&Shear/Joystick proportional control | | ● |
| Rotation line proportional on Joystick | | ● |

| UPPER STRUCUTURE | | |
|------------------|--|---|
| Battery Box | | ● |
| Storage Box | | ● |
| Anti-Skid plates | | ● |

| UNDERCARRIAGE | | |
|---------------------------|--|---|
| UC-3665 | | ● |
| Track shoes 600mm | | ● |
| Carrier-roller per side 2 | | ● |
| Track roller per side 10 | | ● |

| LIGHTS | | |
|---------------------|--|---|
| Roof light (LED) 2x | | ● |
| Boom light (LED) 1x | | ● |

SANY OVERSEAS SERVICE

GLOBAL SUPPORT
ANYTIME
ANYWHERE

900+

 Overseas service centers

3500+

 Professional technical service engineers

365×24

 Support

Service Center

Tel: +86 4006098318

Mail: CRD@sany.com.cn

WhatsApp: +86 19908478631 (Only WhatsApp)

My SANY

On-demand professional equipment repair services available anytime, anywhere, ensuring rapid response and efficient solutions.



Download MySANY for a comprehensive, all-in-one experience!

 DOWNLOAD ON THE App Store

 GET IT ON Google Play

 DOWNLOAD APK 6.0+



