



SANY HEAVY MACHINERY LTD

<http://www.sanyglobal.com>

This manual was printed in 2023. The product information may have been changed when you read it. Products (including specific configuration, detail, etc.) are based on the specific models and products applicable to markets outside China, which are displayed and sold by agents. For more details, please visit the local authorized agent of SANY Heavy Machinery Ltd.



SY385H

Engine power

231kW/2100rpm

Bucket capacity

2.1m³

Operating weight

39000kg



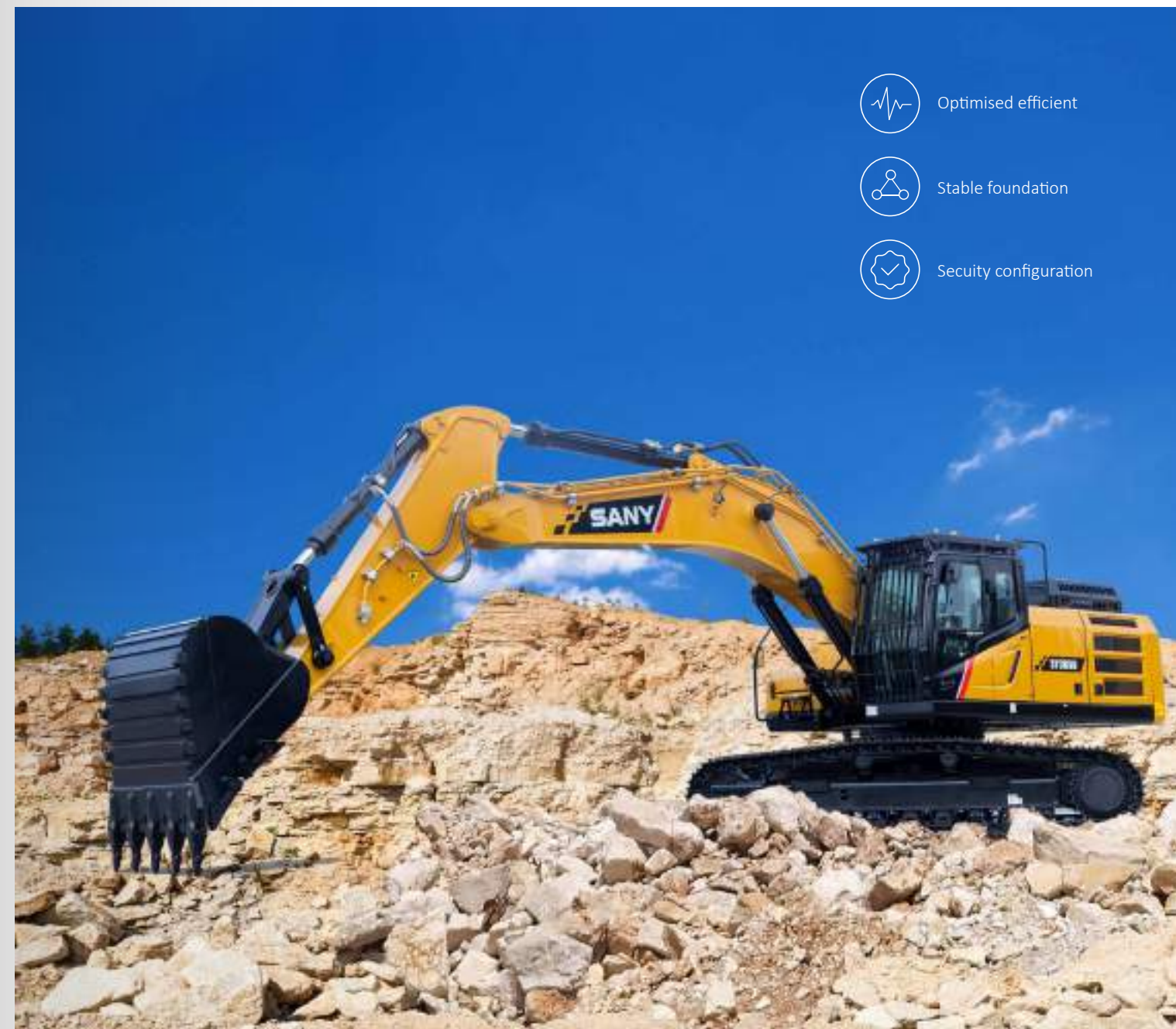
Optimised efficient



Stable foundation



Security configuration





Strong power

► Engine

The engine is Cummins QSL9, which has strong power and reliability.

Customized universal characteristics curve with large economical fuel consumption zone to achieve low fuel consumption.



► Main valve

Pioneering external flow merging technology for the arm valve features large-diameter merging pipelines, significantly reducing pressure loss and thereby lowering fuel consumption.



► Main pump

The main pump maximizes flow utilization, achieving on-demand supply. Compared to a negative flow system, it reduces mid level reflux loss while responding faster and reducing energy loss.



► Filtration system

The filtration system provides clean fuel for the engine under various harsh working conditions, ensuring engine's long-lasting operation.

Quality

Develop optimum weight distribution for arm and boom to achieve maximum lifting capacity.

User experience

Equipped with comfortable and fully adjustable seat and consoles for the spacious cab.

Dimensions

The heavy-duty undercarriage maintains stability under any situation.



Safety

Rear and side cameras provide a comprehensive view of the working environment.

Components

The powerful CUMMINS unit, with corresponding exhaust treatment, guarantee full performance for every task.

Economy

For specific application, optimum operating mode, high performance or minimum fuel consumption can be selected.

Because quality counts

Crawler excavators are high-performance machines that have to prove themselves again and again in the tough conditions of the construction site. We therefore make no compromises when it comes to quality. Clean robot-controlled welded seams and high-quality hydraulic line piping ensure that you can rely on your SANY.



Stable in every situation

With the SY385H, the sturdy HD undercarriage is the perfect base. A triple chain guard and three stem shoes as standard equipment complete the robust undercarriage design.



Smart ventilation

To ensure that the engine does not overheat, even at maximum output, the SY385H is equipped with a powerful, electronically controlled fan.

An integrated coupling ensures that the fan only starts to run when it is actually needed. This saves fuel, decreases noise levels and reduces emissions.

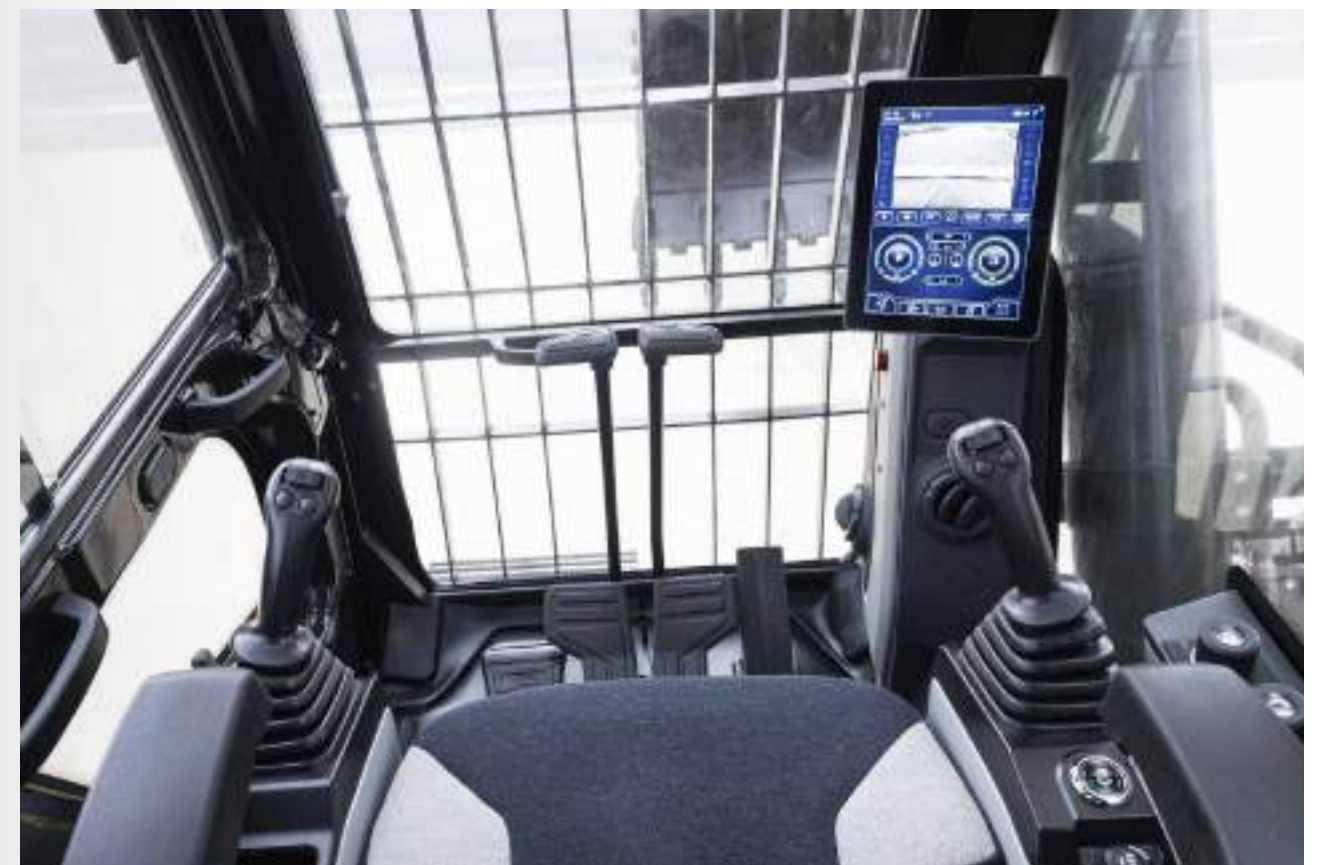




Comfort and intelligence

Intelligent cab-The new SANY cab features Huaxing's brand-new intelligent central control system. ICC3.0. Incorporate automotive electronics technology, leading the industry in digital technological sense and operational convenience.

One-touch start-stop, Multi-functional control handle, 10-inch touch screen, and automatic A/C provide a driving experience on par with that of an automobile.



Safety protection



Cab safety net

The comprehensive safety package is completed by protective grilles on the roof and in the full section of the cab window.



Two cameras

A rear camera and a side camera are installed as standard.



Lightning and horn

In poor lighting conditions, seven work spotlights provide excellent illumination.



Emergency stop switch and main power switch



Armrests, pedals, and non-slip relay coordination ensure both ease of use and safety



Left and right rearview mirror

The ideally angled rearview mirror combined with the high clarity camera ensures zero blind spots.

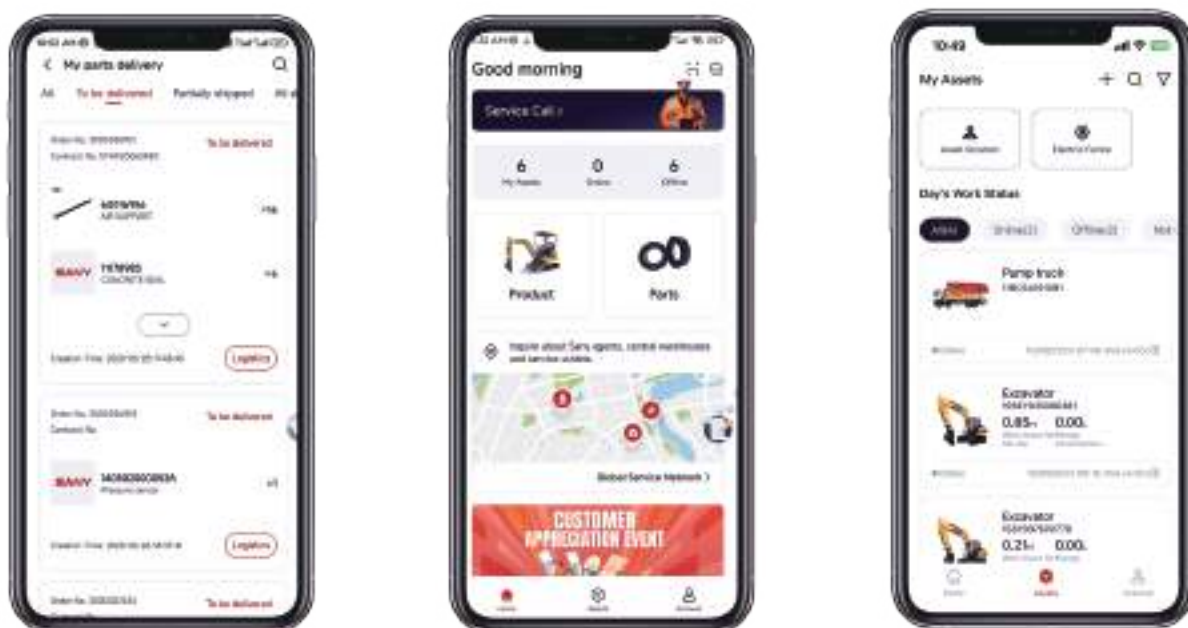
Simplicity is key in maintenance

To address the harsh conditions in mining environment, we have enhanced the design for the ease of replacement of maintenance parts. With "large space and easy accessibility," the increased operational space for replacing various maintenance parts ensures hassle-free maintenance operation.



MySANY APP

Easy use, quick response



Quick Parts Access

- View parts manuals
- View parts availability
- Check equipment & parts order status

Fleet Management

- Check equipment working condition
- Monitor equipment energy consumption
- Set up e-fence

Streamlined Service

- One-click to initiate service request
- Check global service network
- View local service team's phone number & email



Scan to download!

Complete research development and test system

It has established complete machine endurance test center with full functions. Each model of excavator must be subjected to over 2,000h field excavating test.

Key components like working device, cab and hydraulic components etc. must be subject to fatigue test over 800,000 times.



Advanced manufacturing technology

SANY has RGV assembling line and fullautomatic welding robots, and possesses high precision machining equipment and precise machining center.

SANY' s manufacturing and assembling lines won five-star national site in 2013 and national quality award in 2014. In 2023, SANY Mini Excavator Factory was awarded as the intelligent factory.












Technical specifications

Specification		Main performance	
Engine	Cummins	Swing speed	8.8rpm
Model	Cummins L9 Stage V	Max. Travel Speed	High 5.4 km/h slow 3.2 km/h
Type	Water-cooled, 6 cylinder, with commonrail and Adblue	Max. Travel Force	320kN
Engine Power	231kw/2100rpm	Bucket Capacity	2.1m³
Maximum Torque	1526Nm/1400rpm	Ground pressure	0.68 kg/cm²
Displacement	8.9L	Gradeability	35°
Batteries	2×12V/50Ah	Bucket Digging Force Iso	235kN
		Arm Digging Force Iso	170kN

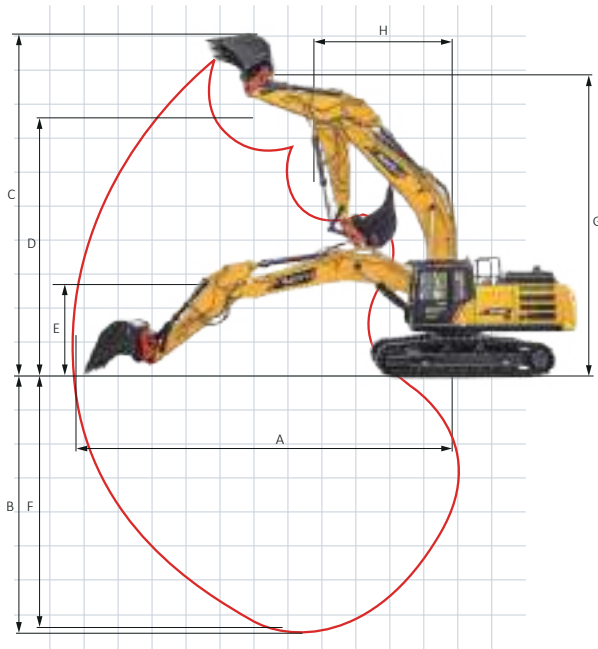
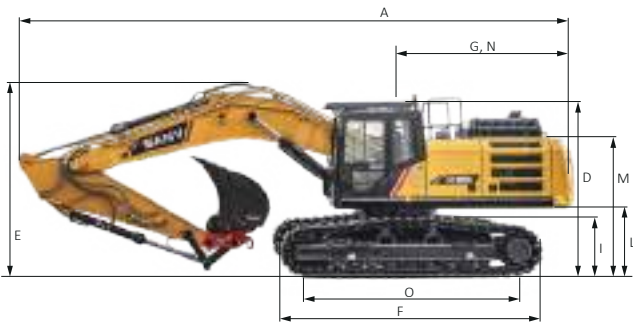
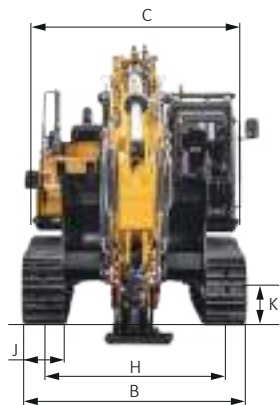
Service Refill Capacities		Traveling part	
Fuel Tank	600L	Number of track shoes per side	49
Engine Coolant	31.5L	Each carrier roller side	2
Engine Oil	36L	Each thrust wheel side	9
Drive (Per Side)	10.6L	Standard track	600mm
Adblue	52L		
Hydraulic Oil Tank	415L		

Lifting capacity table

Table of lifting capacity									
		Boom -- 6500mm		Arm -- 2600mm		Track width -- 600mm		Counterweight -- 7800KG	
		3.0m		4.5m		6.0m		7.5m	
Load point height		 		 		 		 	
7.5 m	kg					*11297	*11297		
6.0 m	kg					*12052	*12052	*11018	*11018
4.5 m	kg			*17532	*17532	*13535	*13535	*11610	*11610
3.0 m	kg					*15210	*15210	*12413	8921
1.5 m	kg					*16441	11675	*13079	8695
Ground line	kg			*22462	*22462	*16837	11457	*13314	8553
-1.5 m	kg			*21099	*21099	*16292	11415	*12825	8527
-3.0 m	kg	*23154	*23154	*18621	*18621	*14581	*14581		
-4.5 m	kg			*14213	*14213				

*at 600 mm track shoes width

Machine dimensions



Overall dimensions (mm)	SY385H
A. Transport length	11432
B. Transport width	3190
C. Overall width of upper structure	2986
D. Height over cabin/ROPS	3550
E. Height of Boom - transport	3746
F. Overall length of crawler	5065
G. Tail length	3461
H. Track gauge	2590
I. Track height	1082
J. Track shoes width	600 (700*) (800*)
k. Min. ground clearance	550
L. Counterweight clearance	1293
M. Engine cover height	2669
N. Tail swing radius	3461
O. Center distance of rollers	4140

Operation range (mm)	SY385H
A. Max. digging reach	10174
B. Max. digging depth	7448
C. Max. digging height	9906
D. Max. dumping height	7125
E. Min. dumping height	3350
F. Max. vertical digging depth	3641
G. Overall height over arm by min. swing radius	8949
H. Min. swing radius	4540

*Wider undercarriage with 800 mm track shoes width

Standard configuration

Operations Comfort / Cabin		Working Equipment		Safety	
Automatic air conditioning C/H*	•	Integrated cooling box	•	Boom and arm load holding valves with overload indicator	•
Radio and speaker	•	10-inch color display	•	Double acting circuit for hydraulic quick coupler with piping	•
Armrests (adjustable)	•	ROPS/FOPS cabin with front protection	•	Breaker&Shear line proportional on Joystick with piping	•
12v outlets	•	Rubber floor	•	Rotation line on Joystick with piping	•
USB port (music)	•			Rotation line proportional on Joystick with piping	•
Air-suspension	•			Flow adjustment for attachments	•
Heated seat	•			Pressure adjustment for attachments	•
Skylight openable	•			Ram protection on both sides of the upper structure	•
				Battery master switch	•
				Travel Alarm	•
				Warning beacon	•
				Rear camera	•
				Camera on right side	•
				Handrails	•
				Lockable hoods	•
				Lockable fuel cap	•

Working Lights		Engine Compartment		Hydraulic system		CAB	
Lights – front (LED)	●	Auto idle	●	Swing brake	●	GPS (standard configuration)	●
Lights – boom (LED)	●	Fuel pump	●	Two-speed	●		
Lights – platform (LED)	●	DPF	●	Piping for additional hydraulic function AUX 1	●		
Lights – back (LED)	●	DOC	●	Piping for additional hydraulic function AUX 2	●		
				Hydraulic pre-pressure operating joysticks	●		

• stands for standard configurations ○ stands for optional configurations