



# SY500H

**Engine power**  
298kW/2100rpm

**Bucket capacity**  
2.2 m<sup>3</sup>

**Operating weight**  
52500kg

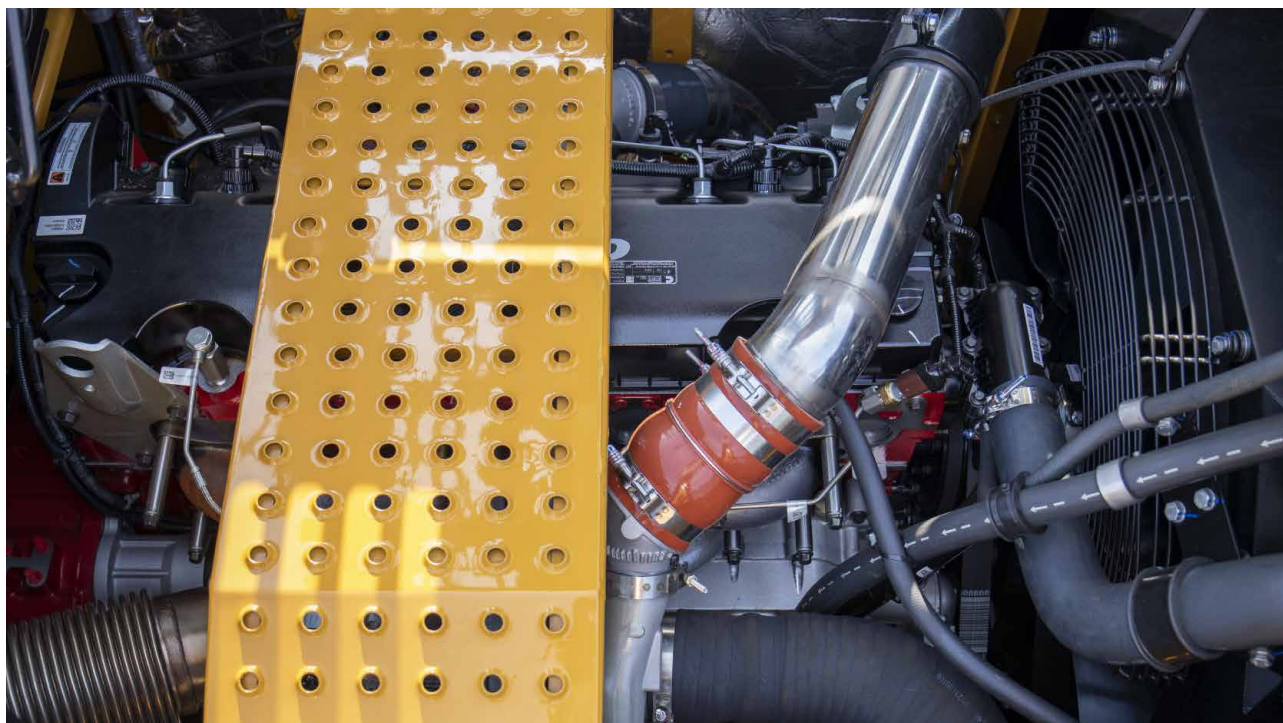
-  Optimised efficient
-  Stable foundation
-  Security configuration



**SANY HEAVY MACHINERY LTD**  
<http://www.sanyglobal.com>

This manual was printed in 2023. The product information may have been changed when you read it. Products (including specific configuration, detail, etc.) are based on the specific models and products applicable to markets outside China, which are displayed and sold by agents. For more details, please visit the local authorized agent of SANY Heavy Machinery Ltd.

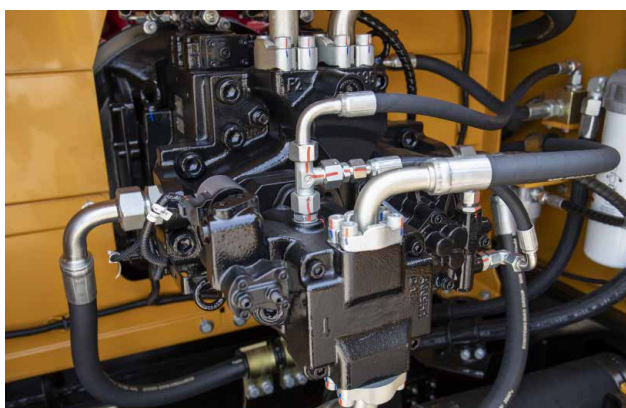




## Strong power

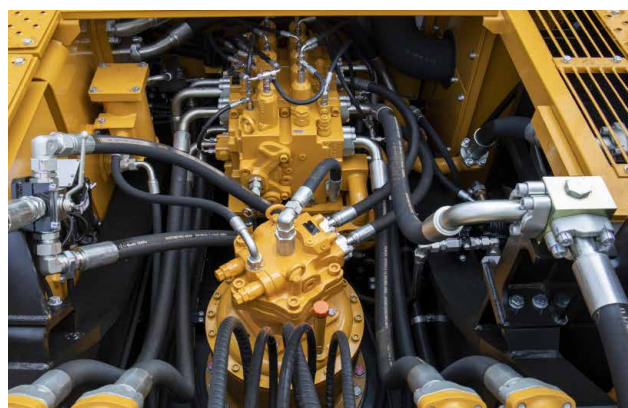
### ► Engine

SY500H uses SANY custom engine, power 252kW, to meet Euro 5 emissions standards, strong power, reliable and durable, to meet the diversified power needs of customers. Using high-precision oil-water separator with filter element, it can effectively filter impurities in fuel while separating water, provide multiple protection to the engine, and extend the service life of the engine.



### ► Main pump

Main pump has pressure cut-off functions to reduce the over flow loss, and the maximum flow of the hydraulic system can reach 385L/min.



### ► Main valve

With high efficiency and energy saving, the newly and electronically controlled positive flow hydraulic system can provide accurate.

### Quality

Gets down to work and takes it all in its stride - from the bottom up, the SY500H is designed to deliver high performance, even in the toughest conditions. Made for the long term.

### User experience

Power is nothing without control. This is why the spacious comfortable driver's cab is designed so that all the controls convenient to reach and the displays are easy to read.

### Dimensions

The robust under carriage is designed down to the last detail to provide the highest levels of stability and reliability. Even under the toughest working conditions, the high-quality construction guarantees continuous operating hours and a long service life.



### Safety

In addition to the extensively glazed driver's cab, the standard rear camera guarantees excellent visibility on all sides with no blind spots. The reinforced cab structure, in accordance with ROPS/FOPS specifications, ensures a safe work environment for the machine operator.

### Components

With its almost 12-liter displacement, the Cummins engine is the foundation of high productivity. The high torque in the low engine speed range delivers superior performance while at the same time guaranteeing low fuel consumption.

### Economy

Digging, loading, moving... Every task makes special demands of the machine. With the intelligent choice of working modes, the components of the SY500H can always be adjusted optimally with regards to fuel consumption and performance.



## Quality

## Extremely Tough

Whether used for extraction in a stone or gravel quarry – these machines are in great demand wherever large amounts of material must be moved. As a robust power machine, the SY500H meets expectations with regards to quality and durability, for example, with its high-quality steel and precise and meticulously computer-controlled welded seams. Or with its safety valves, which are 100% reliable in the worst-case scenario.



## Dimensions

## Improved stability, increased transferable force

The SY500H features an extremely stable and robust frame. The large stand space provides the basis for the driver to work safely and precisely, even on uneven ground, and offers the best standing properties – meaning power can be used optimally.

## User experience

## Productivity at the touch of a button

An optimal balance between performance and fuel efficiency can easily be achieved with the preselectable work modes – for every task. This prevents a reduction in the engine speed and performance, as well as uneconomically high engine speeds. It ensures fast, efficient work. And protects the components, extending the service life.



## Components

## Maximum power, maximum productivity

To ensure that the engine does not overheat, even at maximum output, the SY500H is equipped with a powerful, electronically controlled fan. An integrated coupling ensures that the fan only starts to run when it is actually needed. This saves fuel, decreases noise levels and reduces emissions. Only main components from well-known brand manufacturers are used: for example, the tried and tested Kawasaki hydraulic system.

## Economy

## MOVING MORE

You can rely on the water-cooled six-cylinder engine with common rail injection in every respect. It scores highly with exemplary values not only when it comes to reliability and performance but also in terms of consumption. Lower fuel consumption, thanks to the latest SCR emissions technology, reduces not only ongoing operating costs but also emissions.







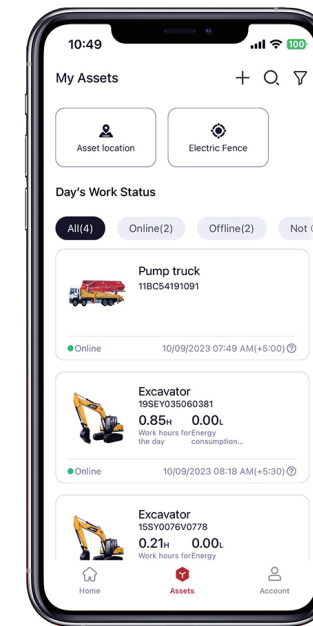
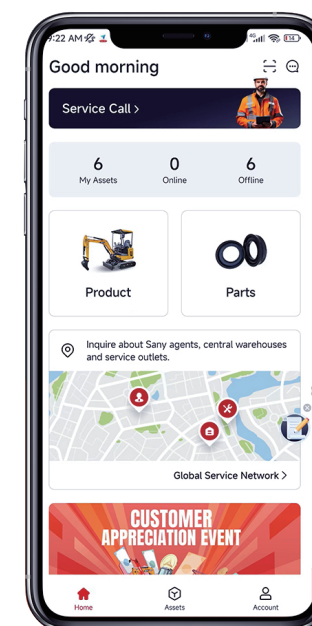
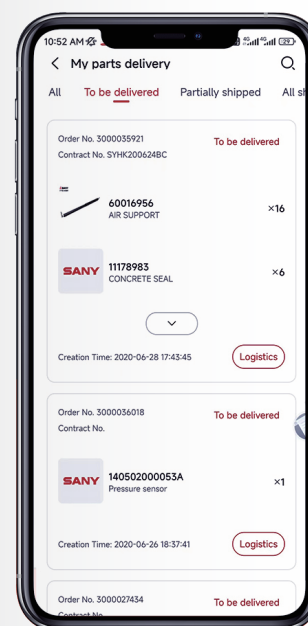
## Ergonomic cab as a production factor

The driver's cab in the SY500H attracts special attention.

- It combines safety and ergonomic factors, offering the driver the best conditions for relaxed and fatigue-free work.
- The focus here is on the comfortable, heated, air-suspension driver's seat with a high backrest that provides lumbar support and easily accessible controls.
- The joystick control allows for precise work in any situation, and the large, easy-to-read display shows all of the key parameters clearly at a glance.
- The powerful heating and the automatic air-conditioning system guarantee the ideal climate.
- Also provided on-board as standard are a radio and 12 V jack, along with plenty of storage space and options.

## MySANY APP

### Easy use, quick response



#### Quick Parts Access

- View parts manuals
- View parts availability
- Check equipment & parts order status

#### Fleet Management

- Check equipment working condition
- Monitor equipment energy consumption
- Set up e-fence

#### Streamlined Service

- One-click to initiate service request
- Check global service network
- View local service team's phone number & email



Scan to download!



# Complete research & development and test system

SANY has established complete machine endurance test center with full functions. Each model of excavator must be subjected to over 2,000h field excavating test.

Key components like working device, cab and hydraulic components etc. must be subject to fatigue test over 800,000 times.



# Advanced manufacturing technology

SANY has RGV assembling line and fullautomatic welding robots, and possesses high precision machining equipment and precise machining center.












SANY's manufacturing and assembling lines won five-star national site in 2013 and national quality award in 2014. In 2023, SANY Mini Excavator Factory was awarded as the intelligent factory.



# Technical specifications

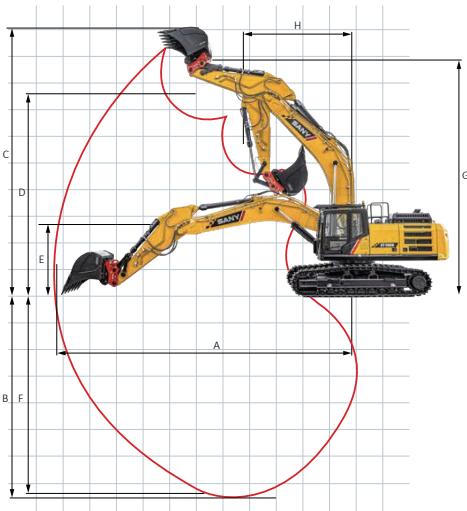
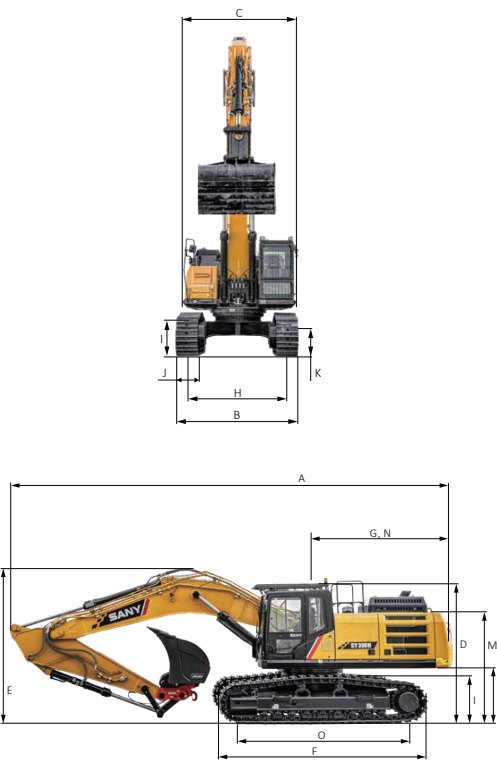
Specification		Main performance		Service Refill Capacities	
Operating weight	52500 kg	Swingspeed	7.9 rpm	Fuel Tank	680 L
Bucket capacity	2.2 m³	Max. Travel Speed	Max 5.1 km/h Low 3.71 km/h	Engine Coolant	50 L
Engine	Stage V	Max. Travel Force	339 kN	Engine Oil	34 L
Model	QSX12	Groundpressure	0.83 kg/cm²	Drive (Per Side)	15 L
Type	Water-cooled, 6 cylinder, with commonrail and Adblue	Gradeability	35°	Adblue	56 L
Engine power	298 kW/ 2100 rpm	Bucket digging force	253 kN	Hydraulic Oil Tank	480 L
Max. torque	2034 Nm/ 1400 rpm	Arm crowd force	227 kN		
Displacement	11.8 L				
Batteries	2×12 V/ 200 Ah				

# Lifting capacities of lower dozer blade

Radius										
 Load point height	3.0m		4.5m		6.0m		7.5m		9.0m	
										
6.0 m	kg						11055	11055	10587	8042
4.5 m	kg			18642	18642	14279	14279	12192	10338	11087 7843
3.0 m	kg			23570	19988	16675	16435	13511	9852	11791 7588
1.5 m	kg			16257	16257	18626	12724	14705	9433	12473 7354
Ground	kg			20366	20366	19732	12327	15515	9153	12928 7 194
-1.5 m	kg	15054	15054	26578	18598	19928	12202	15750	9040	12900 7155
-3.0 m	kg	25395	25395	24999	18849	19161	12298	15157	9108	
-4.5 m	kg	29297	29297	22004	22004	17031	12629	12794	9465	

\*at 600 mm track pads width

# Machine dimensions



Overall dimensions (mm)	SY500H
A. Overall length(transportation)	12103
B. Overall width	3596
C. Upperstructure width	3292
D. Height over cabin/ROPS	3476
E. Height of Boom - transport	3600
F. Overall length of crawler	5459
G. Tail length	3736
H. Track gauge	2740
I. Track height	1220
J. Track pads width	600 (700*) (900*)
k. Min. ground clearance	560
L. Counterweighth clearance	1355
M. Engine cover height	3160
N. Tail swing radius	3736
O. Center distance of tumblers	4412

Operation range (mm)	SY500H
A. Max. digging reach	12035
B. Max. digging depth	7705
C. Max. digging height	10929
D. Max. dumping height	7647
E. Min. dumping height	2833(3350 ARM) 3181(3000 ARM) 2350 (3900 ARM)
F. Max. vertical digging depth	6278
G. Overall height over arm by min. swing radius	9103
H. Min. swing radius	5216

\*Wider undercarriage with 800 mm track pads width

# Standard configuration

Operations Comfort / Cabine				Working Equipment	
Heater	•	AUX 1 on Joystick	•	Boom and arm load holding valves with overload indicator	•
Automatic air conditioning C/H*	•	AUX 2 on Jovstick	•	Double acting circuit for hydraulic quick coupler with piping	•
Radio and speaker	•	Removable front-window	•	Breaker&Shear line proportional on Joystick with piping	•
Armrests (adjustable)	•	Sky light openable	•	Rotation line proportional on Joystick with piping	○
Airsuspension seat	•	Integrated cooling box	•	Flow adjustment for attachments	•
Heated seat	•				
Wiper	•				
Sprayer f. wiper	•				

Safety		Woring Lights		Engine	
Battery master switch	●	Lights – front (LED)	●	Auto idle	●
Travel Alarm	●	Lights – boom (LED)	●	Diesel filter	●
Warning beacon	●	Lights – platform (LED)	●	DOC	●
Camera	●				●
Handrails	●				
Lockable hoods	●				
Lockablge fuel cap	●				

Hydraulic system		Undercarriage	
Swing brake	•	Steel tracks 600	•
2 speed travel	•	Holes/loops for fixing	•
Piping for additional hydraulic function AUX 1	•		
Piping for additional hydraulic function AUX 2	•		
Hydr. Pre-pressure operating joysticks	•		
Mainfilter	•		

• stands for standard configurations    ○ stands for optional configurations