






# SY235H

**Rated power**  
122kW/2300rpm

**Bucket capacity**  
1.25m<sup>3</sup>

**Total weight**  
24000kg

-  Improved comfort
-  Easy operating
-  More Equipments



SANY HEAVY MACHINERY LTD  
<http://www.sanyglobal.com>

This manual was printed in 2025. The product information may have been changed when you read it. Products (including specific configuration, detail, etc.) are based on the specific models and products applicable to markets outside China, which are displayed and sold by agents. For more details, please visit the local authorized agent of SANY Heavy Machinery Ltd.



## Strong power

### ► Engine

The highly efficient engine with common rail technology guarantees excellent performance. Three different operating modes for the various operating conditions precisely adjust the engine and hydraulic power to the requirements. This improves the excavator's response behaviour and ensures lower fuel consumption and reduced emissions.



### ► Main pump

The position-controlled hydraulic system adjusts the required pressure and oil quantity according to requirements. The powerful, variable piston pumps reach a flow rate of 2 x 222 l/min and therefore achieve a very high level of efficiency at a low engine speed.



### ► Main valve

The designation is according to the needs of customers, which has "high reliability, small pressure loss, high flow distribution efficiency, smooth compound action" and other outstanding advantages, to help customers easily solve heavy work.



Includes the large monitor which can be set to several languages, the automatic climate control system, the powerful heating, the keypad with an additional USB port for the driver's own audio devices, etc.



## Comfortable driving

For drivers to fully concentrate on their work, they first need to be sitting comfortably. The individually adjustable, air-suspension seat offers a comfortable workstation from which all of the controls are within easy reach.

The multifunctional joysticks make it easy to control the attachment devices reliably and precisely, directly relaying the control commands without delay.

# Powerful in performance

## .01

### Components

High quality and tried & tested the water-cooled Cummins diesel engine with common rail technology and AdBlue system guarantees reliable performance, even under tough working conditions. The complete package is rounded off by the finely tuned Kawasaki hydraulic system.



## .02

### Dimensions

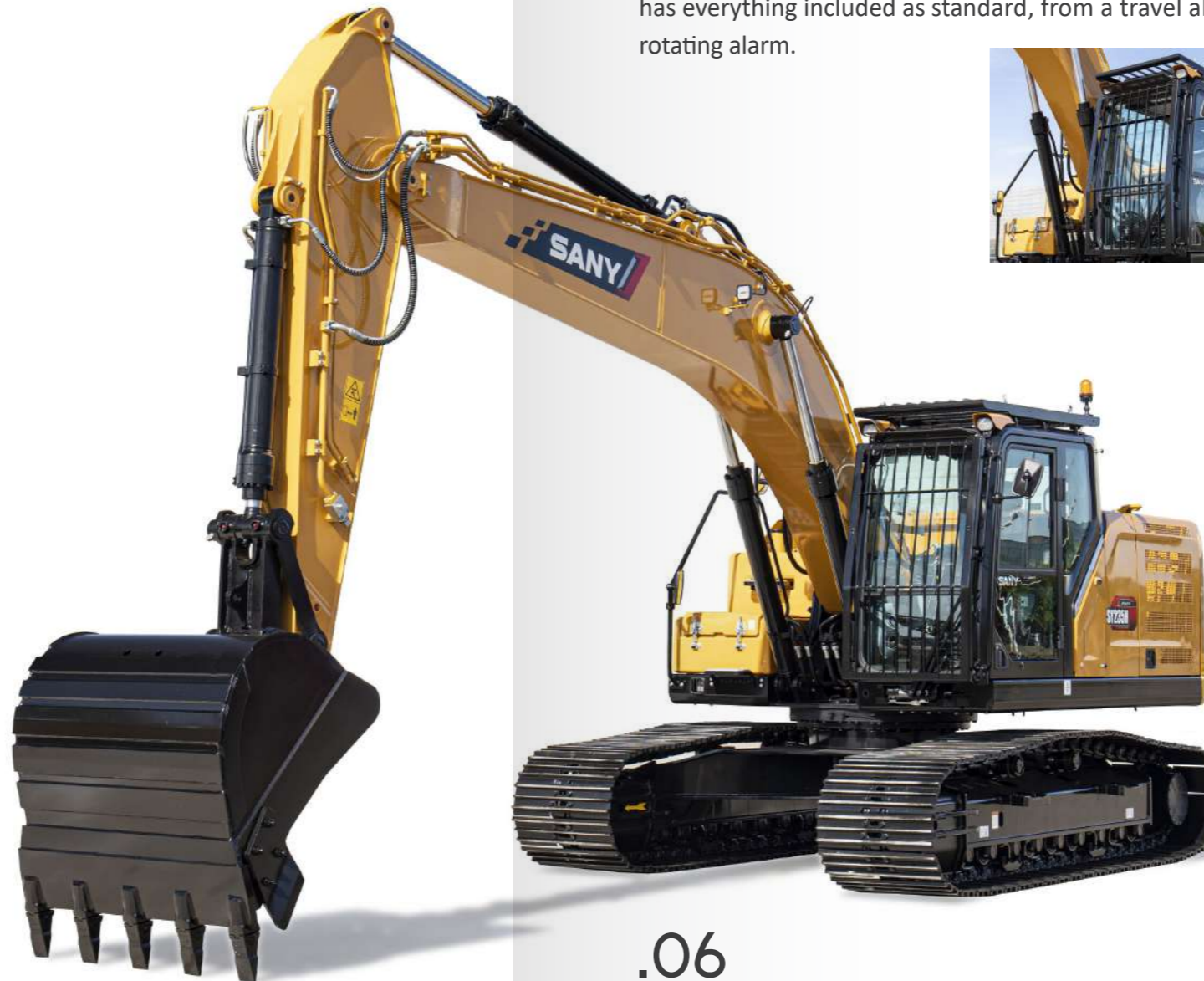
Agile power – the SY235H works through its programme quickly and with great power. This excavator has great power reserves in its 23 tonnes. The machine is mounted on a stable HD undercarriage so that it can be used to the full.



## .03

### Quality

The machines have a great deal of work to do during their tough day-to-day work on construction sites. This is why from the design stage, to selecting the materials used, quality and conducting the final checks all excavators by SANY are designed to be robust. For instance, all welded seams are computer controlled by robots this maximum precision ensures stability and reliability.



## .04

### Safety

Safety as a production factor– it is only possible to work cost-effectively if you work safely. This is why the large safety package has everything included as standard, from a travel alarm to the rotating alarm.



## .06

### Stability

The SY235H 's particularly stable heavy-duty undercarriage provides the maximum possible stability. Its welded reinforcements and the use of robust, high strength steel ensure minimal wear, even when used continually under the maximum load. The steel chains used also offer the highest quality standard – for a stable foundation on any surface.

## .05

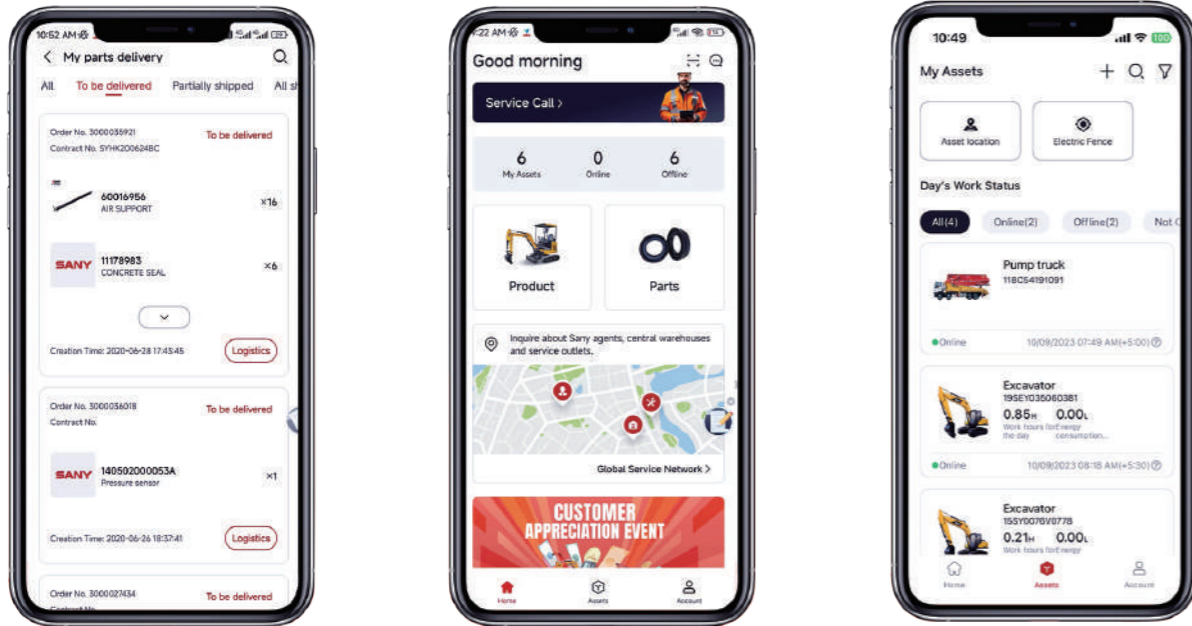
### User experience

Comfortable workstation – the cabin of the SY235H leaves nothing to be desired. All of the controls are within easy reach from the airsuspension seat which supports the driver 's back. Maintenance and service support is also easy to reach: Thanks to the large and easily accessible service doors and clear layout of the most important components, this work is quick and easy to complete.



# MySANY APP

## Easy use, quick response



### Quick Parts Access

- View parts manuals
- View parts availability
- Check equipment & parts order status

### Fleet Management

- Check equipment working condition
- Monitor equipment energy consumption
- Set up e-fence

### Streamlined Service

- One-click to initiate service request
- Check global service network
- View local service team's phone number & email



Scan to download!

# Complete research & development and test system

SANY has established complete machine endurance test center with full functions. Each model of excavator must be subjected to over 2,000h field excavating test.

Key components like working device, cab and hydraulic components etc. must be subject to fatigue test over 800,000 times.



# Advanced manufacturing technology

SANY has RGV assembling line and fullautomatic welding robots, and possesses high precision machining equipment and precise machining center.

SANY's manufacturing and assembling lines won five-star national site in 2013 and national quality award in 2014. In 2023, SANY Mini Excavator Factory was awarded as the intelligent factory.

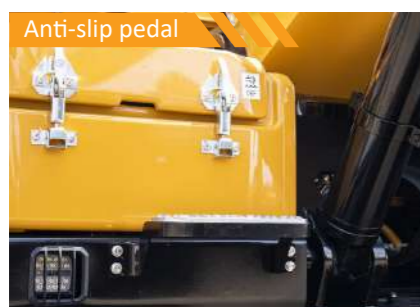




# Technical specifications

Specification		Main performance	
Rated weight	24000 kg	Swing speed	11.1 rpm
Model	QSB6.7	Max. travel speed	5.4/3.4 km/h
Type	Water-cooled, 6 cylinder, with commonrail and Adblue	Max. Drawbar Pull	222 kN
Rated power	122kW / 2300rpm	Gradeability	35°
Maximum torque	732Nm / 1500rpm	Bucket capacity	0.8/1.0/1.25 m <sup>3</sup>
Displacement	6700 ccm	Ground pressure	0.49 kg/cm <sup>2</sup>
Batteries	2x12 V	Bucket digging force ISO	150 kN
		Groundpressure	117 kN

## Safety facility



Anti-slip pedal



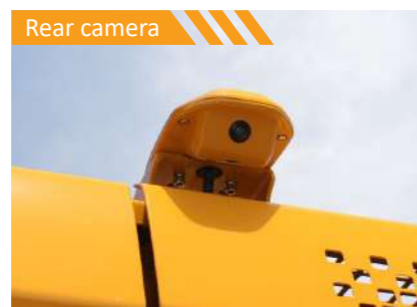
Traveling alarm lamp



Battery main switch



Safety hammer



Rear camera



LED lamp

Hydraulic system		Relief valve settings	
Mainpump	2 x variable-piston-pump with electronic positive control	Implement circuit	343 bar
Max. oilflow	2 x 222 L/min	Power boost	373 bar
Travelmotor	2 speed axial piston motor with planetary reducer and automatic multi-disc brake	Swing circuit	275 bar
Swingmotor	Axial piston motor with planetary reducer and automatic holding brake	Travle circuit	343 bar
		Pilot pressure	39 bar

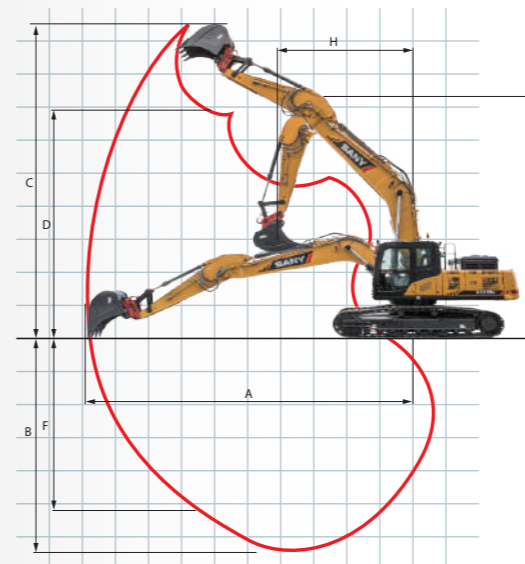
Service refill capacities		Under and upper structure	
Fuel tank	370 L	Boom length	5700 mm
Engine coolant	27.6 L	Arm length	2925 mm
Engine oil	27 L	Bottomrollers	9
Drive (per side)	5.5 L	Toprollers	2
Adblue	189 L	Rotation device	Planetary gear reducer driven by an axial piston motor, automatic hydraulic released slewing brake
Hydraulic oil tank	280 L		

# Table of lifting capacity

LIFTING CAPACITIES*												
Load point height	Radius								Max. digging reach			
	3.0m		4.5m		6.0m		7.5m		Capacity			
												mm
7.5m	kg					*4848	*4848			*4395	*4395	6100
6.0m	kg					*5017	*5017			*4270	3898	7200
4.5m	kg					*5501	*5501	*5152	*5152	*4175	3244	7900
3.0m	kg			*7946	*7946	*6269	*6269	*5473	4528	*4005	2890	8300
1.5m	kg			*9492	*9492	*7056	6015	5005	4409	*4058	2744	8400
0	kg	*7639	*7639	*10320	8794	*7602	5838	4912	4320	*4553	2774	8200
-1.5m	kg	*12435	*12435	*10372	8710	6643	5764	4888	4297	5101	2998	7700
-3.0m	kg	*13541	*13541	*9657	*9657	*7212	5805			6135	3578	6800
-4.5m	kg	*10674	*10674	*7736	*7736					*6742	4970	5500

\* at 800 mm track pads width

# Machine dimensions



## Overall dimensions (mm) SY235H

A. Transport length	9635
B. Transport width *	3180
C. Upperstructure carriage	2862
D. Height over cabin/ROPS(without guards)	3170
E. Height of Boom-transport	3288
F. Overall length of crawler	4445
G. Tail length	2915
H. Track gauge	2380
I. Track height	950
J. Track pads width	800
k. Min. ground clearance	468
L. Counterweight clearance	1060
M. Engine cover height	2950
N. Tail swing radius	2915
O. Center distance of tumbler	3640

## Operation range (mm) SY235H

A. Max. digging reach	9745
B. Max. digging depth	6450
C. Max. digging Height	9740
D. Max. dumping height	6735
F. Max. vertical digging depth	5800
G. Overall height over arm by min.swing radius	7680
H. Min. swing radius	3622

# Standard configuration

Engine System		Hydraulic system	
Automatic engine speed control	•	Semi-electronic main control valve	•
Automatic engine idle shutdown	•	Mode switch	•
Electric refueling pump	o	Boom and stick regeneration circuits	•
		Auto digging boost	•
		Quick coupler circuit	o
		AUX 1 & AUX 2	•

Cabin		Electrical system	
ROPS Certification	•	Maintenance free battery	•
Heated air suspension seat	•	LED left/right-side boom lights, cab lights	•
10" display	•	Programmable time-delay LED working lights	•
Key panel	•	Quick hitch of quick coupler	•
Parallel wiper	•		
Keyless button	•		
Top and openable front guard	o		
Sun roller blind	•(front + roof) o(right)		

Safety and security	
Rear and right cameras	•
Ground-level engine shut-off switch	•
360° visibility	•
Swing/travelling alarm	•
Seat belt alarm	•

• stands for standard configurations o stands for optional configurations